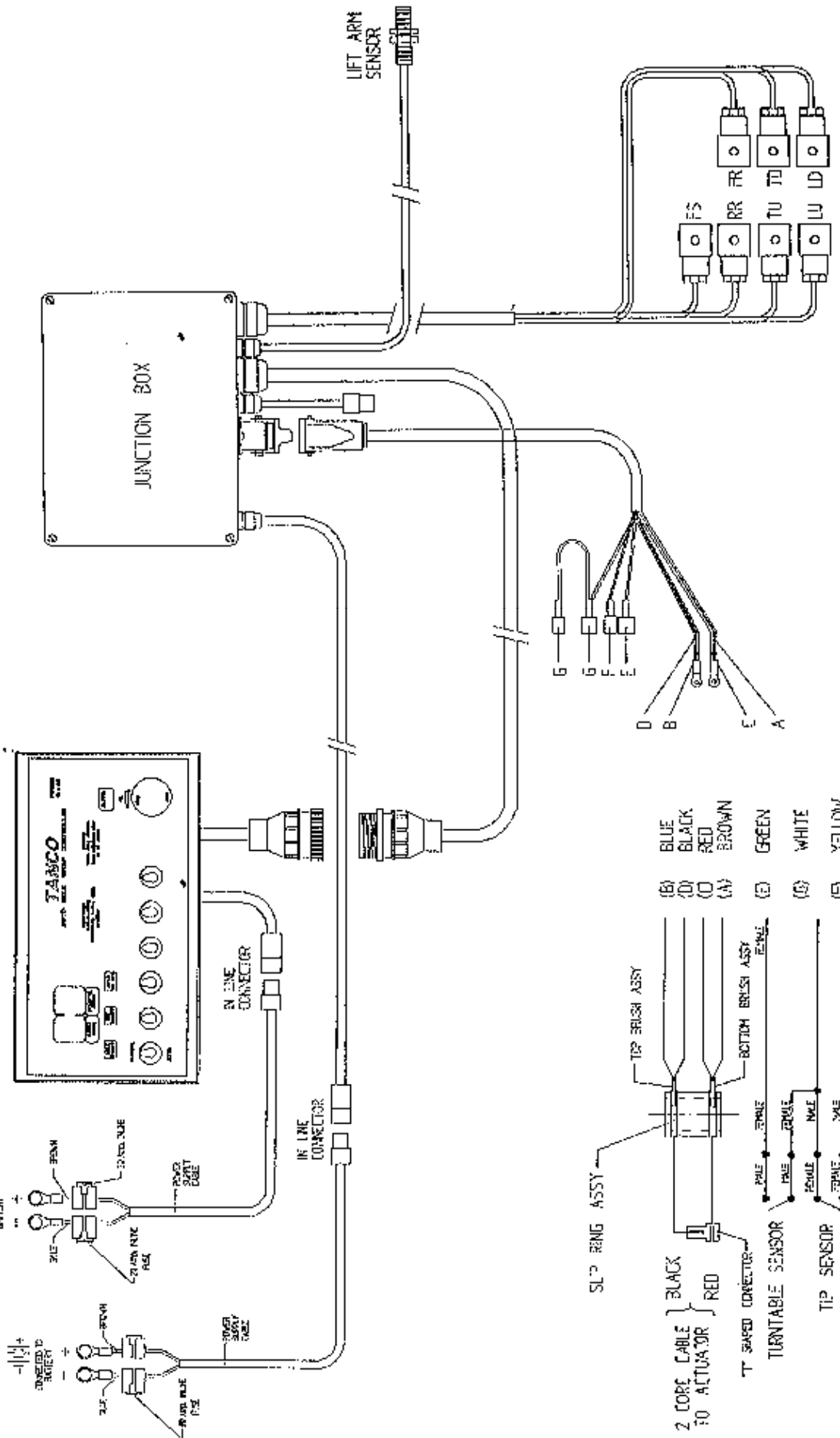


**TANCO AUTOWRAP  
1050A MODEL 1995  
OPERATORS HANDBOOK  
AND  
PART-LIST  
WD65-1050A-MO595**

TANCO AUTOWRAP 550A/1050A MODELS (1995)  
 JUNCTION AND CONTROLLER FOR 3 BANK VALVE



# TANCO AUTOWRAP 1995 DRIVE BELT TENSIONING SYSTEM

## BELT TENSIONING PROCEDURE

1. CHECK THAT HYDRAULIC MOTOR MOUNTING BRACKET IS SECURE IN POSITION.
2. LOOSEN M10 BOLT WHICH CLAMPS BELT TENSIONER BODY TO MOTOR MOUNT.
3. TENSION BELT BY ADJUSTING TENSIONER USING SPANNER IN DIRECTION OF ARROW "X" UNTIL SETTING OF 30 IS REACHED.
4. RE-TIGHTEN M10 BOLT TO SECURE TENSIONER IN POSITION.

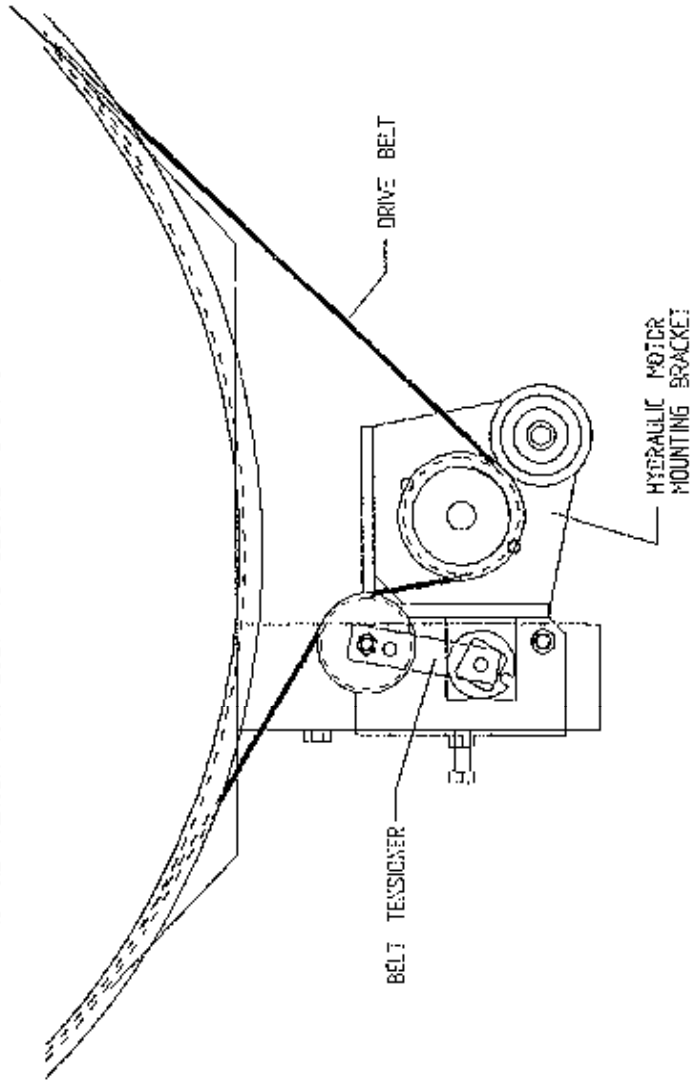
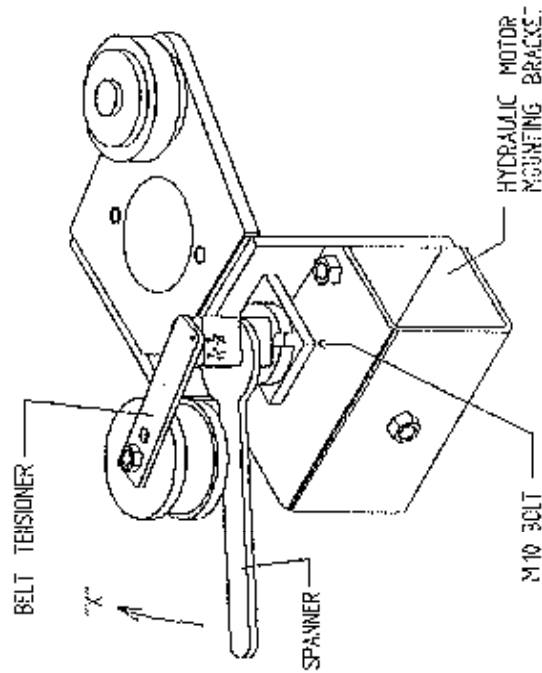
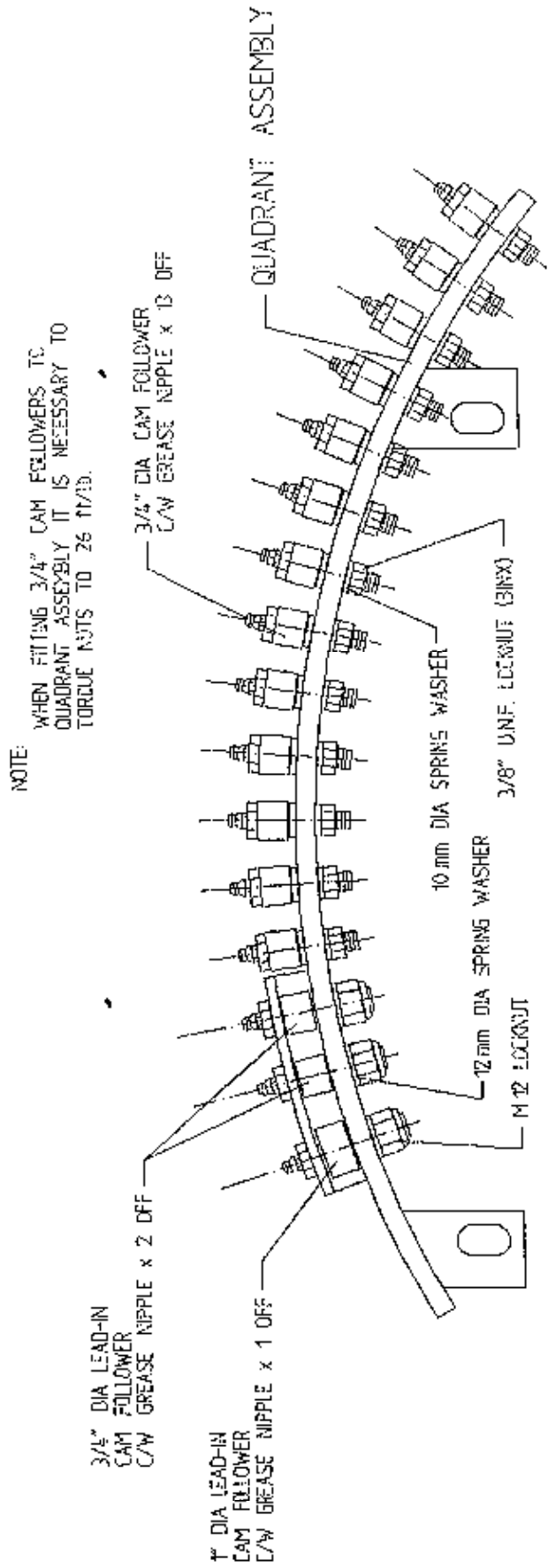


Fig. 3

# TANCO AUTOWRAP 1050 MODEL 1995 QUADRANT ASSEMBLY INSTRUCTIONS



NOTE:  
WHEN FITTING 3/4" CAM FOLLOWERS TO  
QUADRANT ASSEMBLY IT IS NECESSARY TO  
TORQUE NUTS TO 26 FT/LB.

3/4" DIA LEAD-IN  
CAM FOLLOWER  
C/W GREASE NIPPLE x 2 OFF

1" DIA LEAD-IN  
CAM FOLLOWER  
C/W GREASE NIPPLE x 1 OFF

3/4" DIA CAM FOLLOWER  
C/W GREASE NIPPLE x 13 OFF

12 mm DIA SPRING WASHER  
10 mm DIA SPRING WASHER

3/8" UNF. LOCKNUT (3INX)

M 12 LOCKNUT

QUADRANT ASSEMBLY

PLAN VIEW OF QUADRANT ASSEMBLY

NOTE:  
ENSURE THAT M 20 HEX HD. BOLT x 10 mm LONG  
USED TO MOUNT 1" DIA SUPPORT WHEELS ON  
TURNABLE ASSEMBLY IS POSITIONED WITH BOLT  
HEAD TO INSIDE TO AVOID COLLIDING 3/4" DIA  
CAM FOLLOWER.

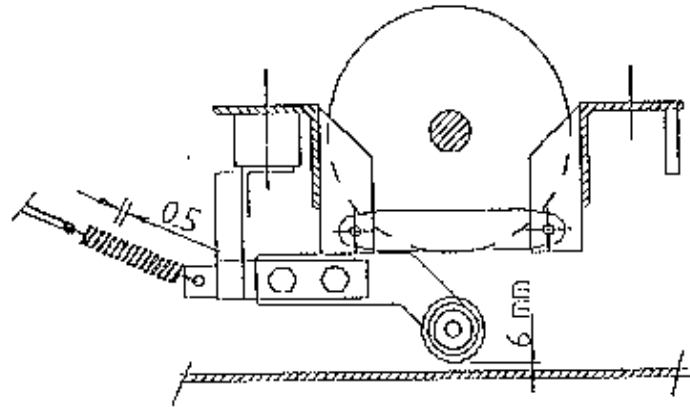
FIG. 9

### Brake Timing Instructions.

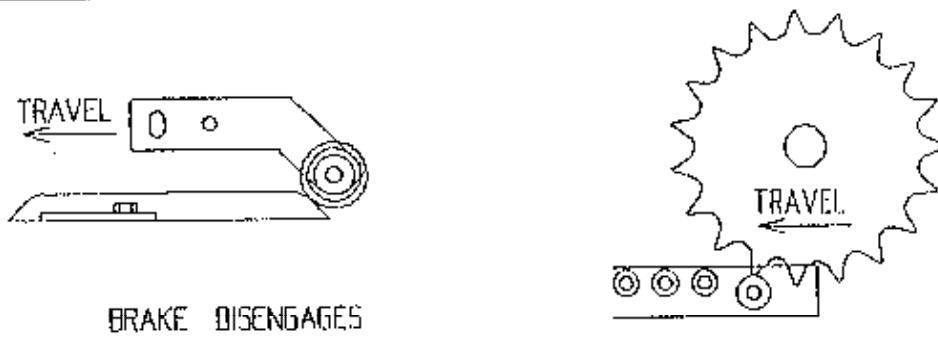
The correct setting of the indexing system is essential to ensure proper bale rotation and correct film overlap. The indexing shaft is fitted with a brake to hold the bale in position after it has rotated. The engaging and disengaging of the brake is actioned by the brake trailing arm roller riding over the brake ramp, releasing the brake and allowing the indexing shaft to rotate. It is essential that the brake is released when the sprocket of the indexing shaft engages with the first cam follower and that it is reapplied when the sprocket releases from the last cam follower. This is factory preset and should only require occasional checking or adjustment. Adjustment of this timing is as follows.

1. With a 17mm spanner, slacken the clamping bolt under the drive belt tensioner until free. This will allow manual rotation of the turntable.
2. The brake spring is extended so that there is a 0.50mm gap between its coils (Fig 10.).
3. Set the gap between the brake trailing arm roller and the floor to 5 - 7 (fig. 10). Note: This gap will decrease as the brake lining wears. If the spring is adjusted this distance must also be reset.
4. Adjust the brake trailing arm so that the brake disengages as the leading tooth of the indexing sprocket passes over the first cam follower. (See Fig 11). As a rule this is when the brake trailing arm roller is half way up the slope of the ramp.
5. Run the sprocket across the cam followers. Two settings should be checked;  
(i) That the gap between the sprocket and cam follower is 4mm (fig 12.). To adjust this remove shims under the quadrant assembly.  
(ii) That the clearance between the sprocket and the quadrant is 5 - 7 mm (Fig 13.) The quadrant assembly can be moved in or out to adjust.
6. Adjust the long brake ramp so that the brake disengages as the bottom sprocket tooth passes over the last cam follower. (Fig 14.).
7. Repeat this procedure on the opposite quadrant.

# BRAKE TIMING INSTRUCTIONS

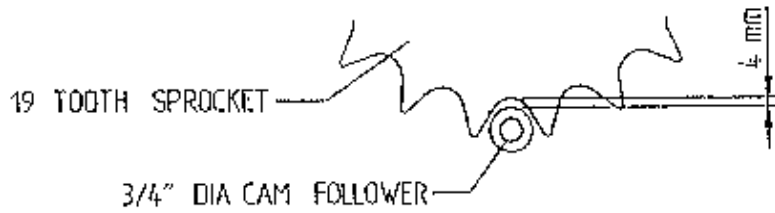


**Fig 10**

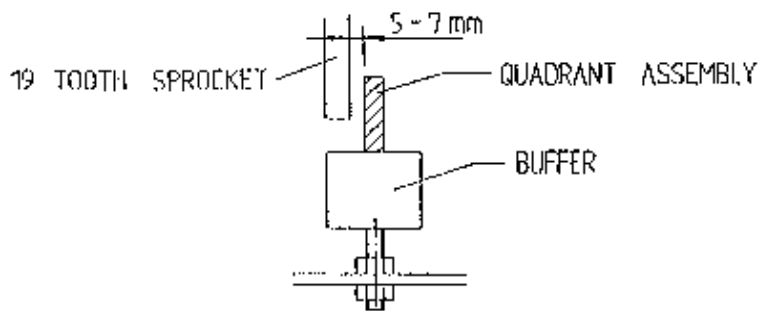


BRAKE DISENGAGES

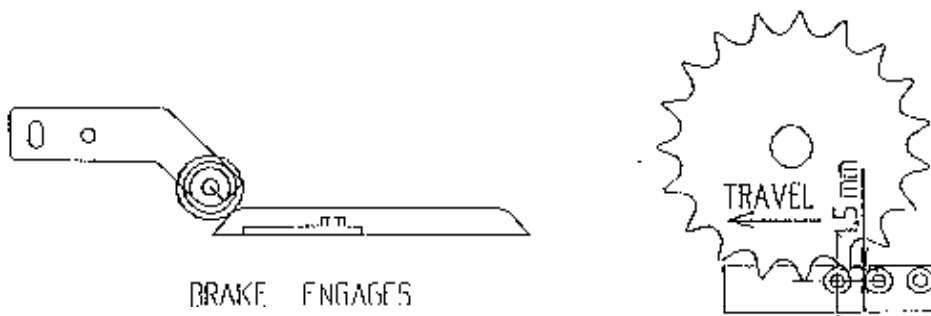
**Fig 11**



**Fig 12**



**Fig 13**



BRAKE ENGAGES

**Fig 14**

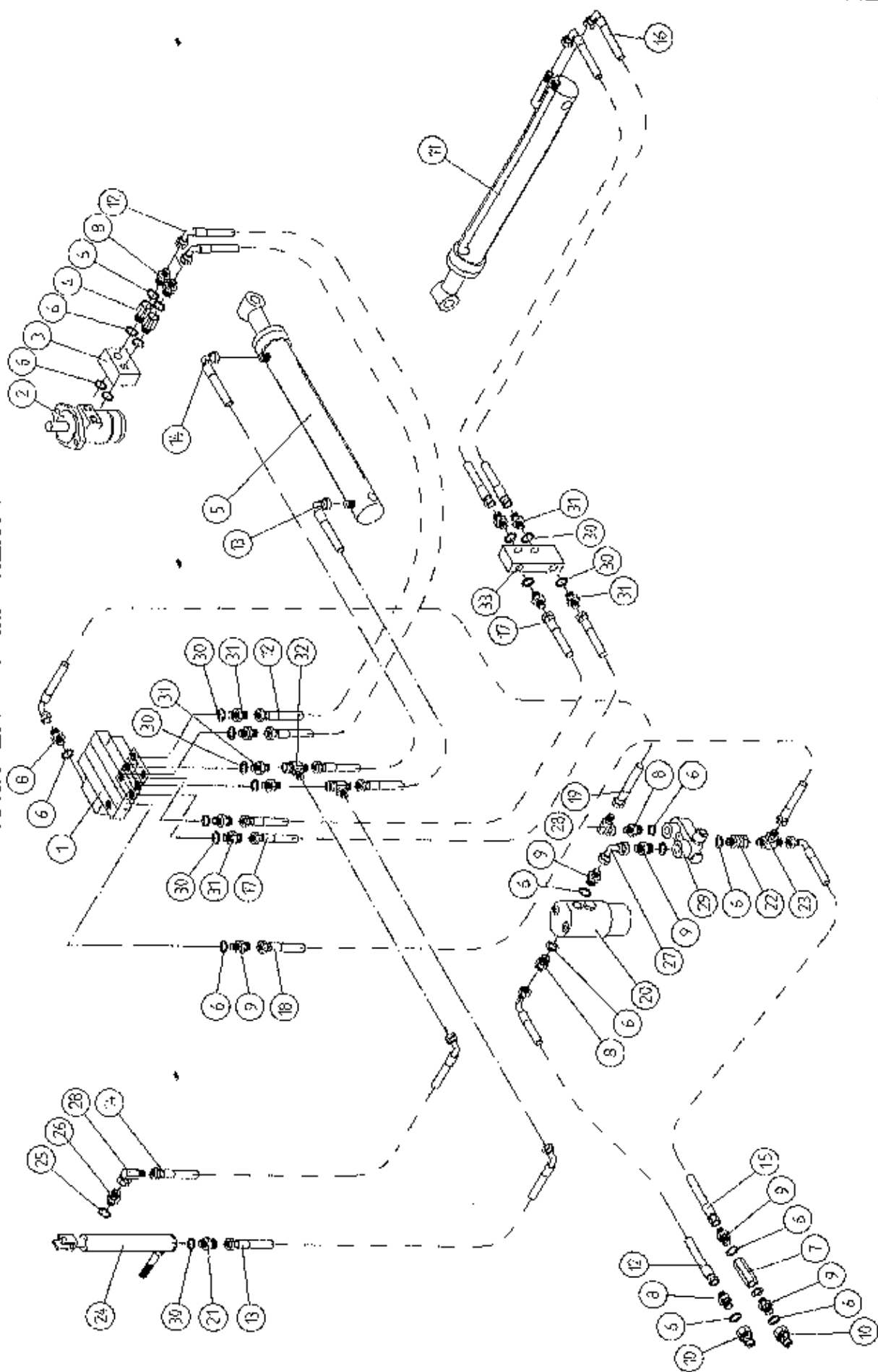
2 22

2 22





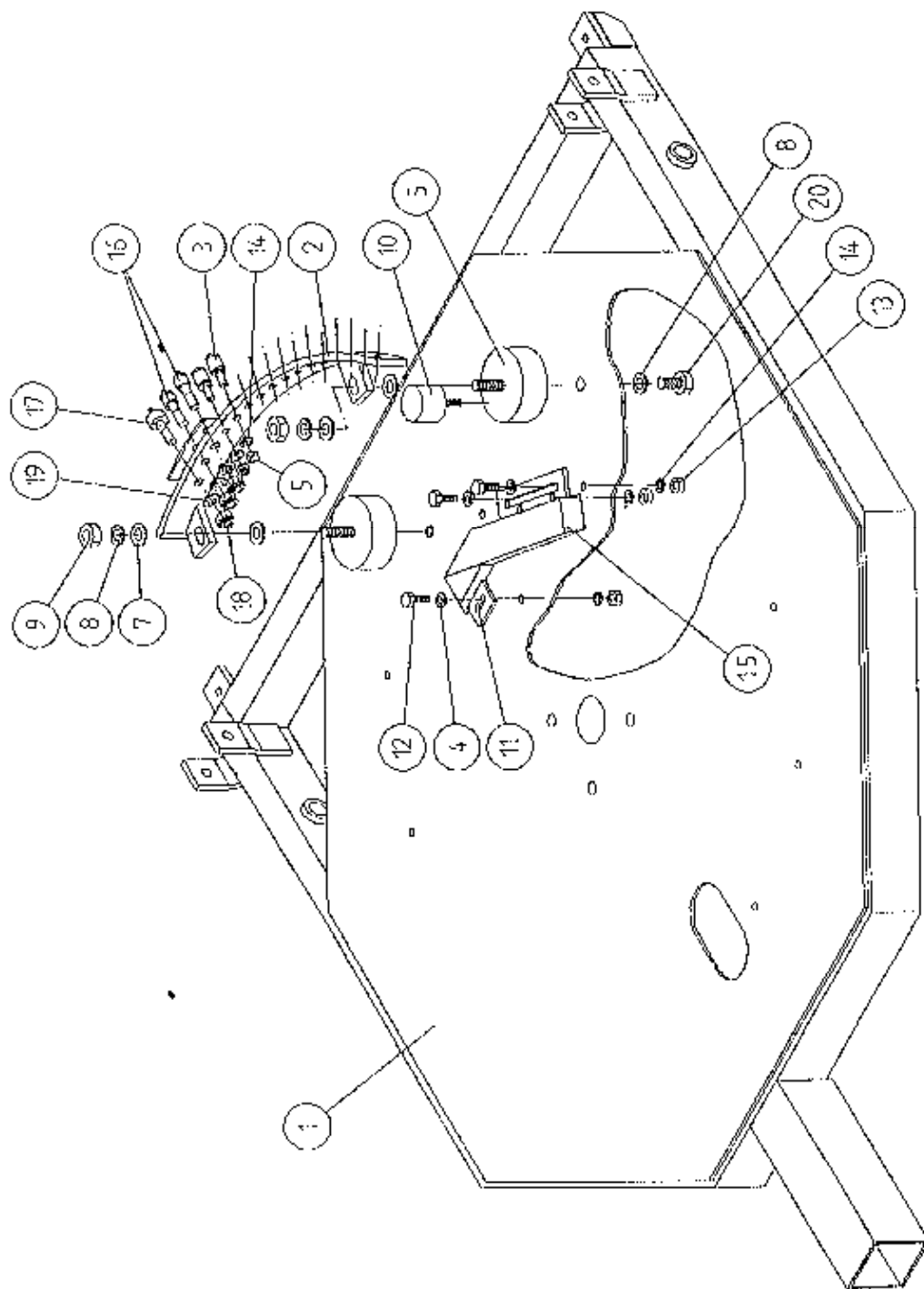
TANCO AUTOWRAP 1050 A MODEL (1995)  
HYDRAULIC COMPONENTS



TANCO AUTOWRAP 1050A MODEL (1995)HYDRAULIC COMPONENTSPARTS LIST

ITEM NO.	DESCRIPTION	QTY	PART-NO.
1.	3 BANK SOLENOID VALVE	1	Z01-03-10-A3
2.	HYDRAULIC MOTOR C.L.	1	Z01-02-RF200
3.	CROSS LINE RELIEF VALVE	1	Z01-03-004
4.	1/2" B.S.P. BOTTOM BANJO BOLT (SPECIAL)	2	Z01-03-002B
5.	HYDRULIC RAM (TIPPING FRAME)	1	Z01-01-AR687
6.	1/2" DOWTY WASHER	15	Z01-04-03
7.	1/2" NON RETURN VALVE	1	Z01-03-017
8.	1/2" X 3/8" ADAPTOR	6	Z01-06-06-08
9.	1/2" X 1/2" ADAPTOR	5	Z01-06-08-08
10.	1/2" MALE END Q/R COUPLING	2	Z01-15-081
11.	HYD. RAM (FOR LIFT ARM)	1	Z01-01-AW
12.	96" ST/90 3/8" D/W HOSE	1	Z38-R2-96-S9
13.	60" ST/90 3/8" D/W HOSE	2	Z38-R2-60-S9
14.	72" ST/90 3/8" D/W HOSE	2	Z38-R2-72-S9
15.	96" ST/90 1/2" D/W HOSE	1	Z12-R1-96-S9
16.	120" ST/90 3/8" D/W HOSE	2	Z38-R2-120S9
17.	16" ST/ST 3/8" D/W HOSE	2	Z38-R2T-17SS
18.	24" ST/ST 1/2" D/W HOSE	1	Z12-R2-24-SS
19.	24" ST/90 3/8" D/W HOSE	1	Z38-R2-24-S9
20.	FILTER	1	Z01-24-08
21.	3/8" X 3/8" ADAPTOR FITTED WITH 0.06" RESTRICTOR.	1	Z01-03-40
22.	1/2" MALE X 1/2" FEMALE ADAPTOR	1	Z01-05-08-08
23.	1/2" MALE "T" PIECE	1	Z01-11-003
24.	HYD. RAM D/A (PULL DOWN ARM)	1	Z01-01-AW25
25.	1/4" DOWTY WASHER	1	Z01-04-01
26.	1/4" X 3/8" ADAPTOR	1	Z01-06-04-06
27.	1/2" FEMALE X 1/2" FEMALE 90 ELBOW	1	Z01-14-018
28.	3/8" MALE/FEMALE 90 ELBOW	2	Z01-14-015
29.	IN LINE FLOW DIVIDER	1	Z01-03-10-A6
30.	3/8" DOWTY WASHER	11	Z01-04-02
31.	3/8" X 3/8" ADAPTOR	10	Z01-06-06-06
32.	3/8" MALE X 3/8" MALE X 3/8" FEMALE "T" PIECE	2	Z01-12-002
33.	OVER CENTRE VALVE	1	Z01-03-10-A8
34.	132" ST/90 3/8" D/W HOSE	2	Z38-R2-132-S9
35.	COPPER WASHER	2	Z01-04-15

TANCO AUTOWRAP 1050 MODEL 1985  
 INDEXING QUADRANT ASSY WITH 750mm FILM



TANCO AUTOWRAP 1050S/1050A MODEL (TRAILED) 1995  
INDEXING QUADRANT ASSEMBLY  
 75% OVERLAP WITH 750 mm WIDE FILM  
PARTS LIST

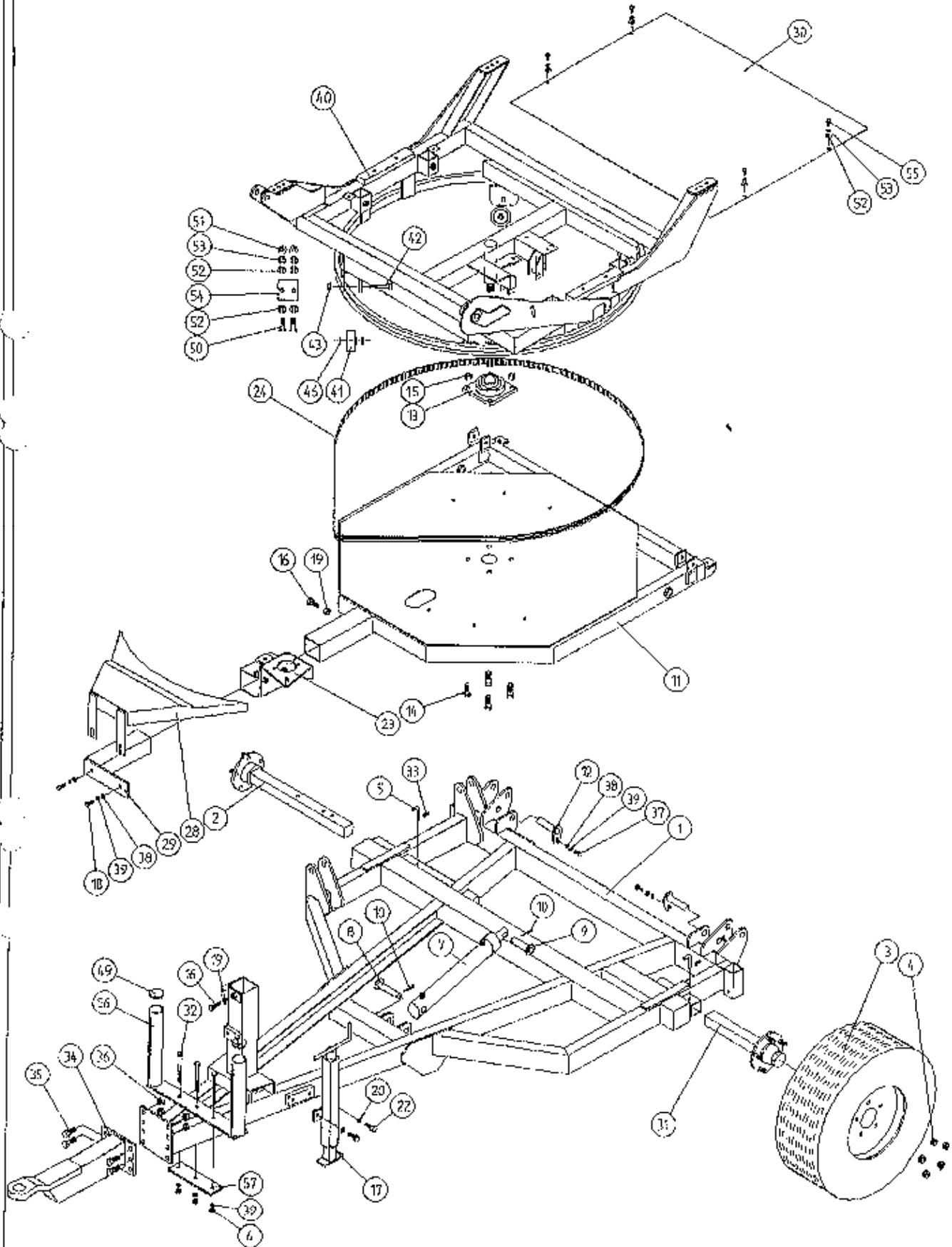
ITEM NO	DESCRIPTION	QTY.	PART-NO.
1.	TIPPING FRAME ASSY	1	WD60-TF
2.	QUADRANT ASSY.	1	WD610-QA
3.	3/4" DIA CAM FOLLOWER (HEAVY DUTY) C/W GREASE NIPPLE	13	Z06-425
4.	10mm DIA FLAT WASHERS	3	Z11-02-10
5.	3/8" UNF LOCKNUTS (BINX)	13	Z20-06
6.	RUBBER BUFFER 100mm DIA x 40mm LONG	2	Z40-22
7.	1.6mm DIA FLAT WASHERS	4	Z10-02-16
8.	1.6mm DIA SPRING WASHERS	4	Z12-02-16
9.	M16 HEX NUT	2	Z18-16
10.	RUBBER BUFFER 50mm DIA x 25mm LONG	1	Z40-23
11.	CAM ASSY. (SHORT)	1	WD623-CAS
12.	M10 HEX HD SET x 30mm LONG	3	Z26-062S
13.	M10 HEX NUT	3	Z18-10
14.	10mm DIA SPRING WASHER	16	Z12-02-10
15.	CAM ASSY. (LONG)	1	WD623-CAL
16.	3/4" DIA LEAD-IN CAM FOLLOWER	2	Z06-427
17.	1" DIA LEAD-IN CAM FOLLOWER	1	Z06-428
18.	M12 HEX HD LOCKUT (NYLOCK)	3	Z23-12
19.	12mm DIA SPRING WASHER	3	Z12-02-12
20.	M16 HEX HD SET x 30mm LONG	2	Z26-120S



TANCO AUTOWRAP 550A/1050A MODELS  
ELECTRICAL COMPONENTS  
PARTS LIST

ITEM NO	DESCRIPTION	QTY	PART-NO
1.	CONTROL BOX	1	D606
2.	JUNCTIN BOX (3RANK SPOOL VALVE)	1	ZDG-JB3
3.	LOOM FOR VALVE C/E HIRSCHMAN	1	ZD606-082
4.	SYSTEM PRESSURE LEAD	1	ZD606-070
5.	WRANER LINEAR ACTUATOR	1	ZD605-510
6.	1 1/4" FUSE HOLDER	1	ZD606-100
7.	MAIN LEAD FOR JUNCTION BOX	1	ZD606-050
8.	SLIP RING ASSY	1	ZD605-308
9.	BRUSHES	1	ZD605-302
10.	7 CORE CABLE C/W HEARTING PLUG	1	D605-7C
11.	24 CORE INTERCONNECTING LEAD C/W CONNECTORS	1	D605-24C
12.	LIFT ARM SENSOR	1	ZD606-LAS
13.	ROTATING SENSOR	1	ZD606-RS
14.	TIP SENSOR	1	ZD606-TS
15.	TWO CORE CABLE FOR SLIP RING	1	D605-02C
16.	MAIN BATTERY LEAD	2	ZD606-030
17.	IN-LINE FUSE	4	ZD606-100

# TANCO AUTOWRAP 1050S/1050A MODELS MAIN ASSEMBLY



W001-PLA

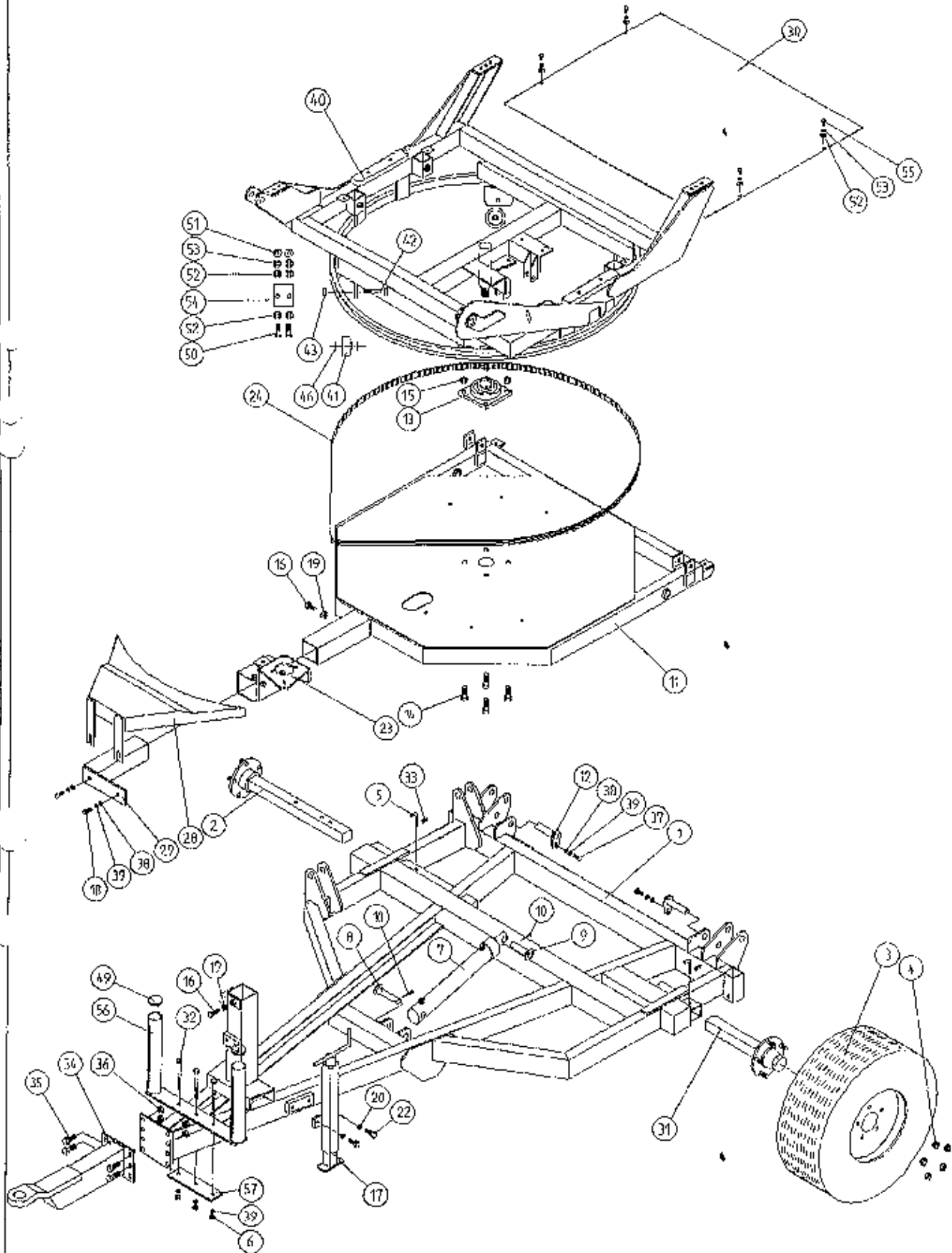
TANCO AUTOWRAP 1050S/1050A MODEL 1995  
MAIN ASSEMBLY

PARTS LIST

ITEM NO.	DESCRIPTION	QTY	PART-NO.
1.	CHASSIS ASSY	1	WD60-CHA
2.	STUB AXLE (LONG)	1	Z04-033
3.	WHEELS	2	Z04-03
4.	WHEEL NUTS	10	Z04-0031
5.	BISSEL PIN	1	Z03-22-AW82
6.	M10 HEX NUT	3	Z18-10
7.	HYD. RAM	1	Z01-01-AR687
8.	RAM BOTTOM PIVOT PIN	1	Z03-02-330
9.	RAM TOP PIVOT PIN	1	Z03-03-50
10.	2" X 1/4" SPLIT PIN	2	Z03-21-29
11.	TIPPING FRAME ASSY	1	WD60-TF
12.	TIPPING FRAME PIVOT PIN C/W GREASE NIPPLE	2	Z03-01-905
13.	2" DIA FLANGE BEARING	1	Z06-49
14.	5/8" UNF HEX HD SET X 2" DIA	4	Z30B-064
15.	5/8" UNF LOCKNUT	4	Z20-10
16.	M12 HEX HD SET X 40MM LONG	2	Z26-084S
17.	SCREW JACK ASSY	1	WD60-JA
18.	M10 HEX HD ST X 30MM LONG	2	Z26-062S
19.	M12 HEX NUT	3	Z18-12
20.	12MM DIA SPRING WASHER	2	Z12-02-12
22.	M12 HEX HD SET X 30MM LONG	2	Z26-082S
23.	HYD MOTOR MOUNTING ASSY	1	WD60-HMB
24.	POLY CHAIN BELT	1	Z05-02-AW2-95
28.	HYD MOTOR GUARD ASSY	1	WD610-HMG
29.	HYD MOTOR GUARD MOUNTING BRACKET	1	WD60-HAMB
30.	TURN TABLE COVER PLATE	1	WD60-093
31.	STUB AXLE (SHORT)	1	Z04-032
32.	M10 HEX HD BOLT x 140mm LONG	3	Z26-0726B
33.	4MM "R" CLIP	2	Z36-02
34.	HITCH ASSY	1	WD65-HIT
35.	M16 HEX HD SET X 45MM LONG	4	Z26-123S
36.	M16 LOCKNUTS	4	Z23-16
37.	M10 HEX HD SET X 25MM LONG (TUFLOCK)	2	Z26-061S
38.	10MM DIA MACHINED FLAT WASHER	4	Z11-02-10
39.	10MM DIA SPRING WASHER	7	Z12-02-10
40.	TURNTABLE ASSY	1	WD610-TA
41.	SUPPORT WHEELS (4" DIA)	4	Z06-466
42.	AXLE ASSY C/W GREASE NIPPLE	4	Z03-22-AW/AX Z39-60
43.	M20 LOCKNUTS	4	Z23-20
46.	SPACER	8	Z18-12
49.	PLASTIC CAP	2	Z32-08
50.	M8 HEX HD SET X 20MM LONG	4	Z26-039S
51.	M8 HEX NUT	4	Z18-08



# TANCO AUTOWRAP 1050S/1050A MODELS MAIN ASSEMBLY

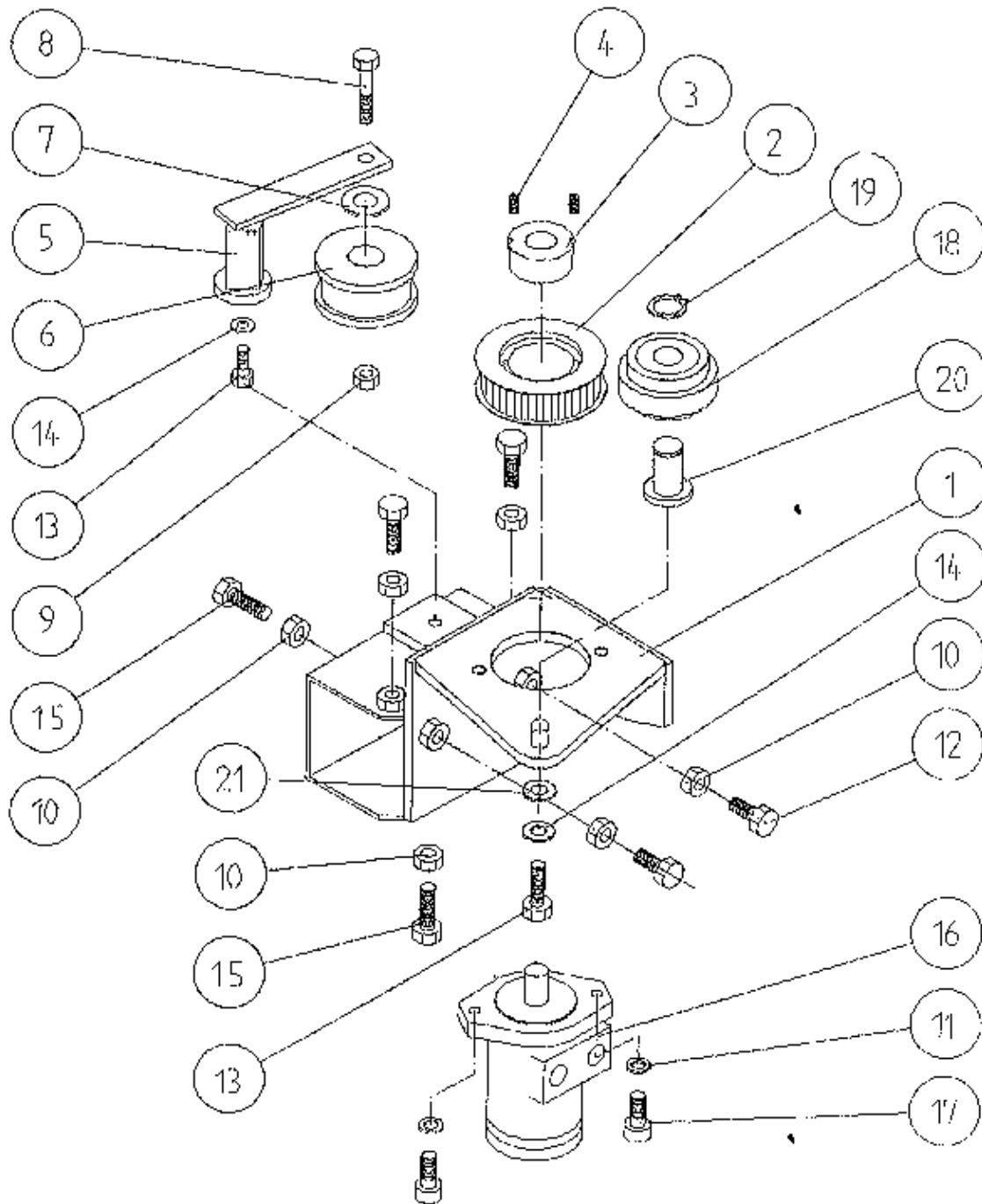


WDB1 - PL10

TANCO AUTOWRAP 1050S/1050A MODEL 1995  
MAIN ASSEMBLY  
PARTS LIST

ITEM NO.	DESCRIPTION	QTY	PART-NO.
52.	8MM DIA FLAT WASHER (MUD FLAT)	8	Z11-02-08
53.	8MM DIA SPRING WASHER	8	Z12-02-08
54.	SCRAPER	2	WD60-705
55.	M8 CHEESE HD ST X 20MM LONG	4	Z13-19-08-20
56.	FILM TRANSPORT BRACKET	1	WD60-FTB1
57.	CLAMPING PLATE	1	WD60-933

# TANCO AUTOWRAP 1995 MODEL HYDRAULIC MOTOR DRIVE ASSEMBLY



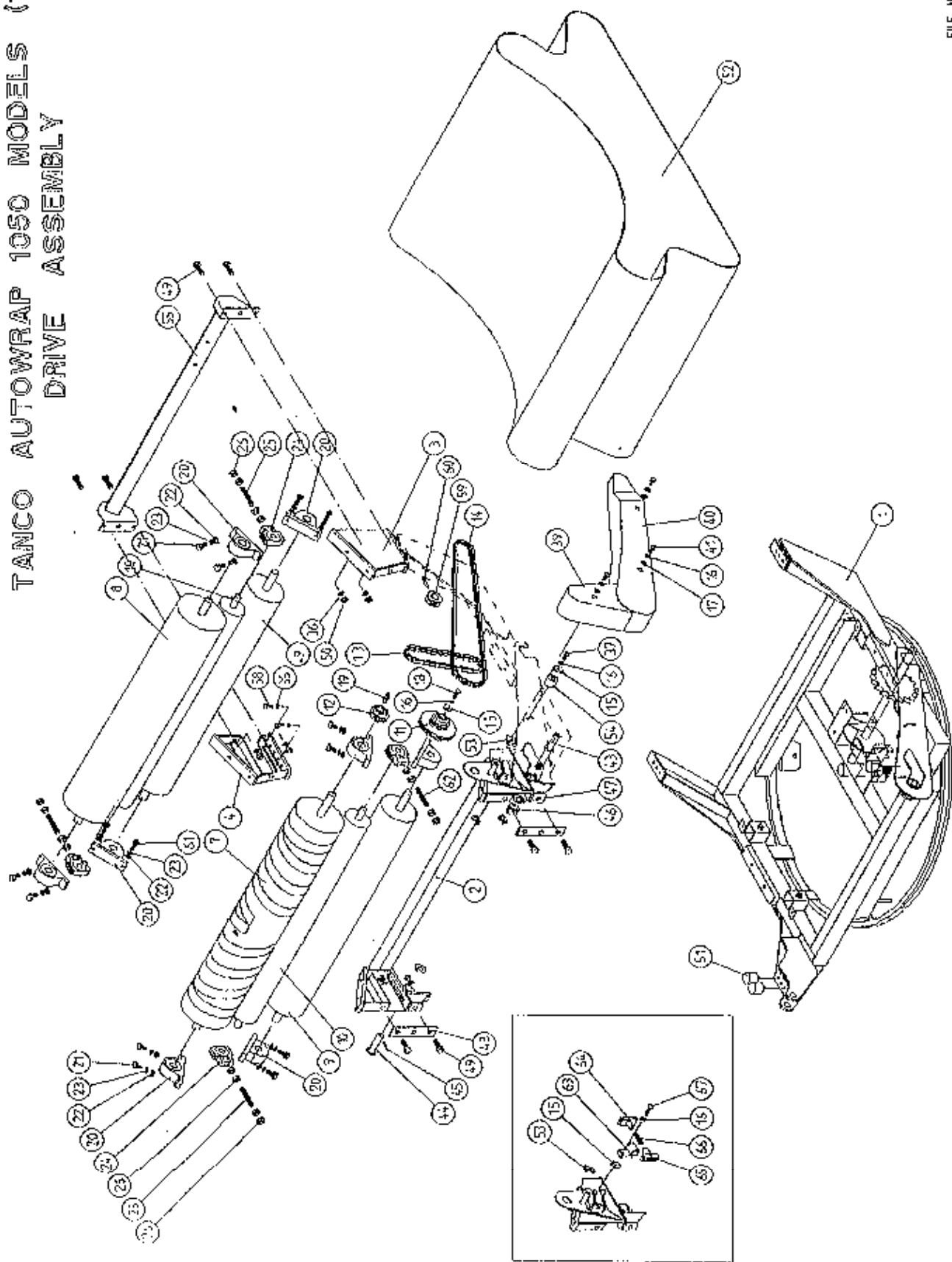
FILE NAME: W1165-PL27

TANCO AUTOWRAP 1995 MODEL  
HYDRAULIC MOTOR DRIVE ASSEMBLY

PARTS LIST

ITEM NO.	DESCRIPTION	QTY.	PART-NO.
1.	HYDRAULIC MOTOR MOUNTING ASSY.	1	WD610-HMB
2.	95 SQ. AW TIMING PULLY	1	Z09-005-AW1-95
3.	TAPER LOCK BUSH TO SUIT 1" DIA SHAFT	1	Z06-AW21
4.	M10 STUDS X 15MM	2	Z28-01
5.	ROSTA TENSIONING UNIT ARM	1	Z06-454
6.	STEPPED ROLLER C/W BEARINGS	1	Z06-456
7.	SPACER	1	WD60-798
8.	M10 HEX HD BOLT X 60MM LONG	1	Z26-067B
9.	M10 LOCKNUT	1	Z23-10
10.	M12 HEX NUT	6	Z18-12
11.	12MM DIA SPRING WASHER	2	Z12-02-12
12.	M12 HEX HD SET X 30MM LONG	2	Z26-082S
13.	M10 HEX HD SET X 30MM LONG	2	Z26-062S
14.	10MM DIA SPRING WASHER	2	Z12-02-10
15.	M12 HEX HD SET X 40MM LONG	6	Z26-084S
16.	HYDRAULIC MOTOR C.L.	1	Z01-02-AR75
17.	M12 SOCKET HD SCREW X 30MM LONG	2	Z13-6-12X30
18.	IDLER ROLLER C/W BEARINGS	1	WD610-BIR
19.	CIRCLIP	1	Z28-525
20.	IDLER ROLLER PIVOT SHAFT	1	WD610-IRS
21.	10mm DIA FLAT WASHER	1	Z11-02-10

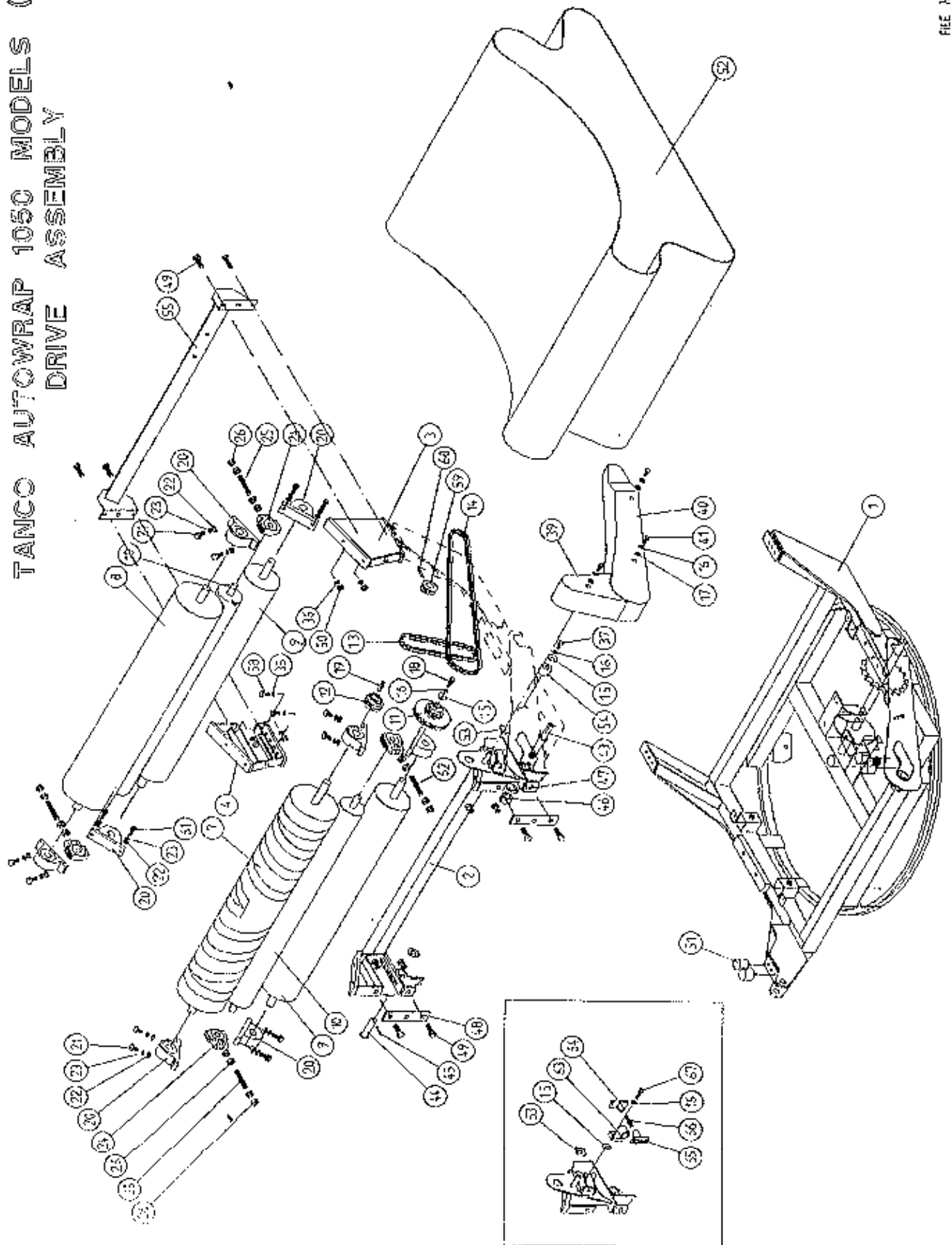
TANCO AUTOWRAP 1050 MODELS (1995)  
DRIVE ASSEMBLY



TANCO AUTOWRAP 1050 MODELSDRIVE ASSEMBLYPARTS LIST

ITEM NO.	DESCRIPTION	QTY	PART-NO.
1.	TURNTABLE ASSY.	1	WD610-TA
2.	ROLLER MOUNTING BRACKET (SWIVEL)	1	WD610-RMS
3.	ROLLER MOUNTING BRACKET (FIXED)	1	WD610-RM1
4.	ROLLER MOUNTING BRACKET (FIXED)	1	WD610-RM2
7.	BIG ROLLER ASSY (DRIVE)	1	WD610-DRA
8.	BIG ROLLER ASSY (IDLER)	1	WD610-BRI
9.	ROLLER ASSY (IDLER)	2	WD65-BRI
10.	TRACKING ROLLER ASSY (LONG)	2	WD610-TRL
11.	38 TOOTH x 19 TOOTH x 1/2" PITCH DOUBLE DUPLEX SPROCKET TO SUIT 08B-2 CHAIN	1	Z06-D610-1938
12.	19 TOOTH X 1/2" PITCH DUPLEX SPROCKET TO SUIT 08B-2 CHAIN	1	Z06-D610-19
13.	CHAIN 08B-2 1/2" PITCH DUPLEX X 63 PITCHES INCL. JOINER	1	Z09-AW-10
14.	CHAIN 08B-2 1/2" PITCH DUPLEX X 156 PITCHES INCL. JOINER.	1	Z09-AW-20
15.	RETAINING COLLAR	2	WD623-071
16.	10mm DIA SPRING WASHER	6	Z12-02-10
17.	10mm DIA FLAT WASHER	5	Z10-02-10
18.	M10 HEX HD SET x 30mm LONG	1	Z26-062S
19.	5/16" KEY STEEL x 32mm LONG	1	WD623-K32
20.	1 1/4" PILLOW BLOCK BEARING	8	Z06-485
21.	M14 HEX HD SET x 45mm LONG	4	Z26-103S
22.	14mm DIA FLAT WASHER	24	Z11-02-14
23.	14mm DIA SPRING WASHER	24	Z12-02-14
24.	SLIDING BEARING STI	4	Z06-47ST
25.	M20 THREADED BAR x 135mm LONG	3	WD610-77
26.	M20 HEX NUTS	16	Z18-20
35.	12mm DIA. SPRING WASHER	12	Z12-02-12
36.	12mm DIA. FLAT WASHER	12	Z11-02-10
37.	M10 HEX HD BOLT x 60mm LONG	1	Z26-066B
38.	M10 HEX HD BOLT x 80mm LONG	1	Z26-0691B
39.	CHAIN GUARD (SMALL)	1	WD610-CGS
40.	CHAIN GUARD (LARGE)	1	WD610-CGL
41.	M10 HEX HD SET X 25MM LONG (TUFLOCK)	3	Z26-061S
43.	SPROCKET/BRACKET PIVOT SHAFT	1	WD610-71
44.	SWIVEL BRACKET PIVOT PIN J-50	1	Z03-03-50
45.	2" X 1/4" SPLIT PIN	1	Z03-21-29
46.	1" DIA UNC LOCKNUT	1	Z23-251
47.	1" H/D FLAT WASHER	2	Z10-02-25
48.	RETAINING PLATE	2	WD610-30
49.	M12 HEX HD SETS X 35MM	8	Z26-083S
50.	M12 HEX NUTS	10	Z18-12
51.	BUFFER 50MM DIA X 42MM LONG	4	Z40-235
52.	BALE BELT 1130MM WIDE X 4470MM LONG	1	Z05-02AWV1-93
53.	LOCKING PLATE	2	WD623-060

TANCO AUTOWRAP 1050 MODELS (1995)  
DRIVE ASSEMBLY

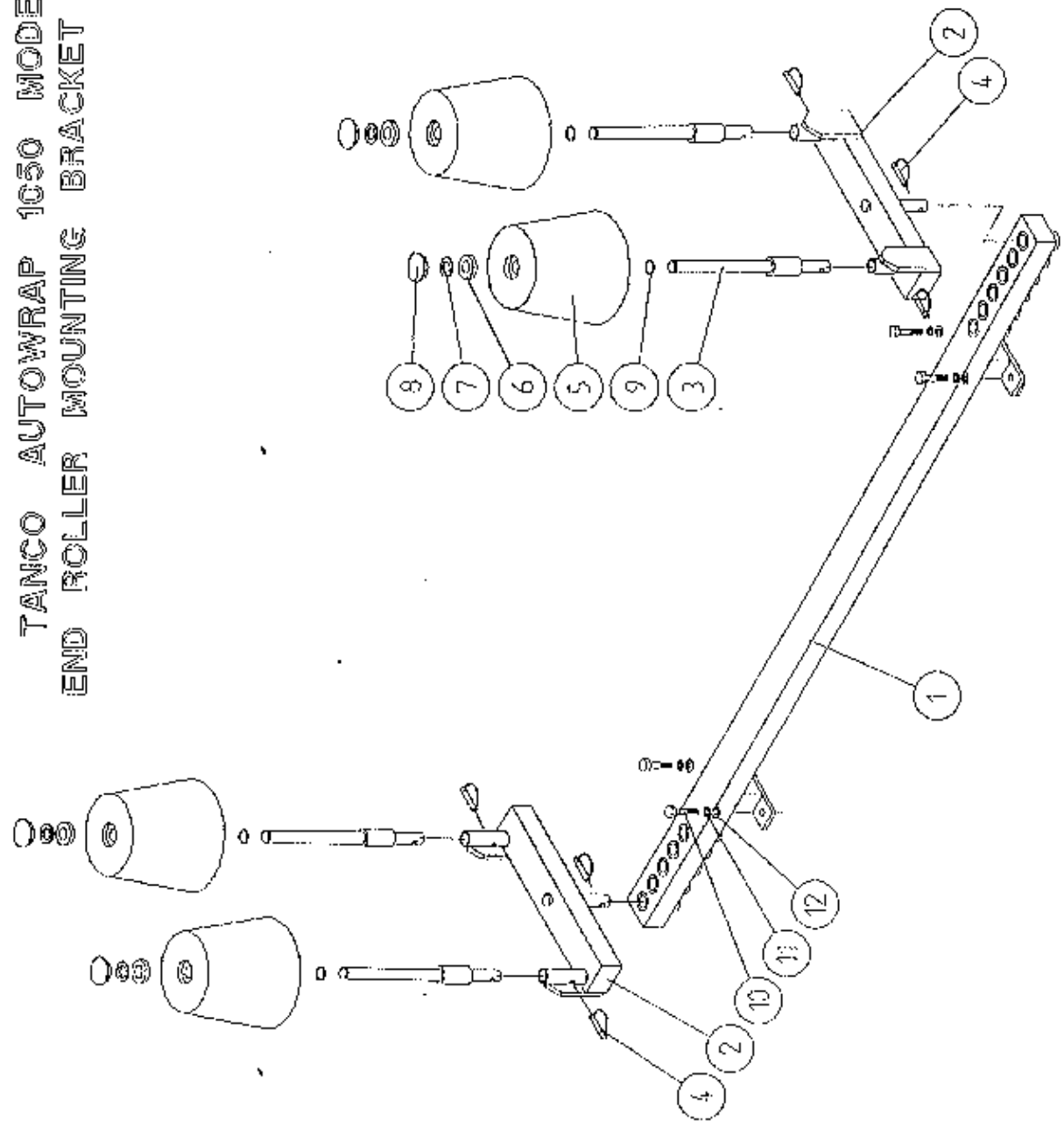


TANCO AUTOWRAP 1050 MODELSDRIVE ASSEMBLYPARTS LIST

54.	CHAIN TENSIONER ROLLER	1	WD65-CT
55.	CUT AND START MOUNTING FRAME	1	WD610-CSM
57.	M14 HEX NUTS	8	Z18-14
58.	M12 HEX HD SETS X 25MM LONG	4	Z26-081S
59.	15 TOOTH X 1/2" PITCH DUPLEX SPROCKET	1	Z06-AW125
60.	5/6" DIA X 45MM LONG TENSION PIN	1	Z03-20-022
61.	M14 HEX HD SET X 50MM LONG	14	Z26-104S
62.	M20 THREADED BAR x 105 mm LONG	1	WD610-113
63.	CHAIN TENSIONER BODY	1	WD610-CT
64.	CHAIN TENSIONER BLOCK ASSY INNER	1	WD610-TB1
65.	CHAIN TENSIONER BLOCK ASSY OUTER	1	WD610-TBO
66.	SPRING 14.5MM O.D. X 1.6MM WIRE X 60MM LONG	1	Z07-48
67.	M10 HEX HD SET X 40MM LONG	1	Z26-064S



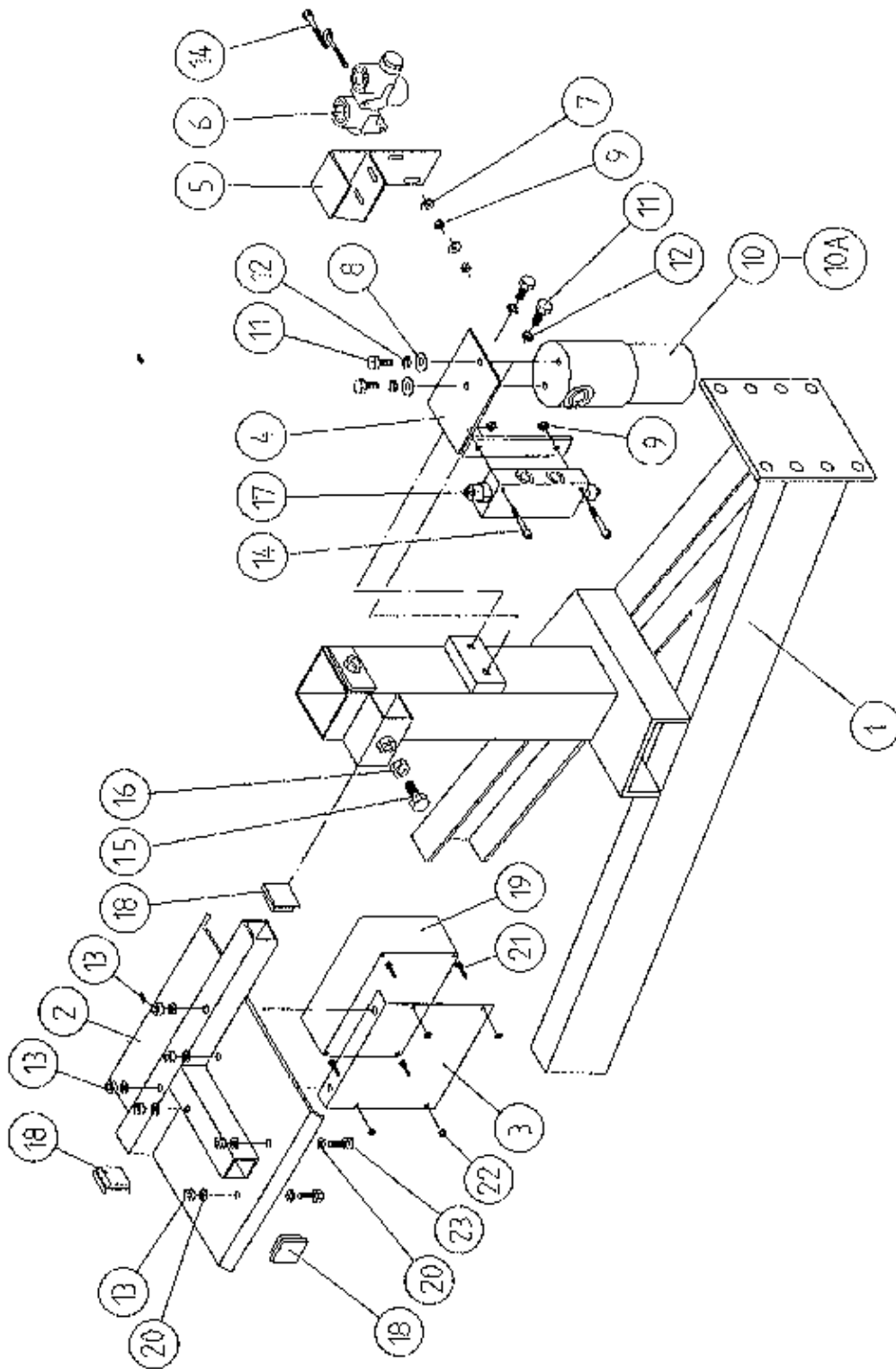
TANCO AUTOWRAP 1050 MODELS  
 END ROLLER MOUNTING BRACKET ASSY.



TANCO AUTOWRAP 1050 MODELS  
END ROLLER MOUNTING BRACKET ASSY  
PARTS LIST

ITEM NO	DESCRIPTION	QTY	PART-NO.
1.	CROSS BEAM ASSY	1	WD610-CBA
2.	END ROLLER MOUNTING BRACKET	2	WD610-RMB
3.	END ROLLER SHAFT ASSY	4	WD610-RSA
4.	10mm DIA "D" LINCH PIN	6	Z38-03
5.	SIDE ROLLER	4	Z06-AWR
6.	BEARING 25mm I.D.	4	Z06-AWRB-93
7.	THRUST WASHER	4	WD60-292
8.	PLASTIC CAP	4	Z06-AWRC
9.	CIRCLIP	4	Z28-525
10.	M12 HEX HD SET x 30mm LONG	4	Z26-082S
11.	12mm DIA SPRING WASHER	4	Z12-02-12
12.	12mm DIA PLAT WASHER	4	Z11-02-10

TANCO AUTOWRAP 1050 A MODEL (1995)  
 VALVE/JUNCTION BOX / FILTER & DIVERTER VALVE MOUNTING BRACKETS ASSY



FILE NAME WD 63 PL 13

TANCO AUTOWRAP 1050A MODEL (1995)VALVE/JUNCTION BOX/FILTER & DIVERTER VALVE MOUNTING  
BRACKET ASSEMBLY  
PARTS LIST

ITEM NO	DESCRIPTION	QTY	PART-NO.
1.	CHASSIS ASSY	1	
2.	3 BANK VALVE MOUNTING BRACKET ASSY	1	WD610-VMP
3.	JUNCTION BOX MOUNTING PLATE	1	WD612-04
4.	OIL FILTER/OVER-CENTRE-VALVE MOUNTING BRACKET	1	WD610-FVB
5.	FLOW DIVIDER MOUNTING BRACKET	1	WD65-FDM
6.	FLOW DIVIDER	1	Z01-03-10-A6
7.	6MM DIA MUD FLAP WASHER	2	Z11-02-061
8.	8MM DIA MUD FLAP WASEHR	2	Z11-02-081
9.	M6 LOCKNUT (NYLOCK)	4	Z23-06
10.	OIL FILTER	1	Z01-24-08
10A.	OIL FILTER ELEMENT	1	Z01-24-08E
11.	M8 HEX HD SET x 25mm	4	Z26-040S
12.	8MM DIA SPRING WASHER	4	Z12-02-08
13.	M8 LOCKNUTS	6	Z23-08
14.	M6 ALLEN HD SOCKET SCREW x 50mm	4	Z13-020-50
15.	M12 HEX HD SET x 30MM	1	Z26-082S
16.	M12 HEX NUT	1	Z18-12
17.	OVER-CENTRE VALVE	1	Z01-03-10-A8
18.	PLASTIC CAP TO SUIT 40 x 40 RHS	3	Z40-07
19.	JUNCTION BOX	1	ZDG-JB2
20.	8MM DIA FLAT WASHER	12	Z10-02-06
21.	M4 ALLEN HD SOCKET SCREW x 16mm	4	Z26-002
22.	M4 LOCKNUT	4	Z23-04
23.	M8 HEX HD SET x 20mm	6	Z26-039S

2 2 2

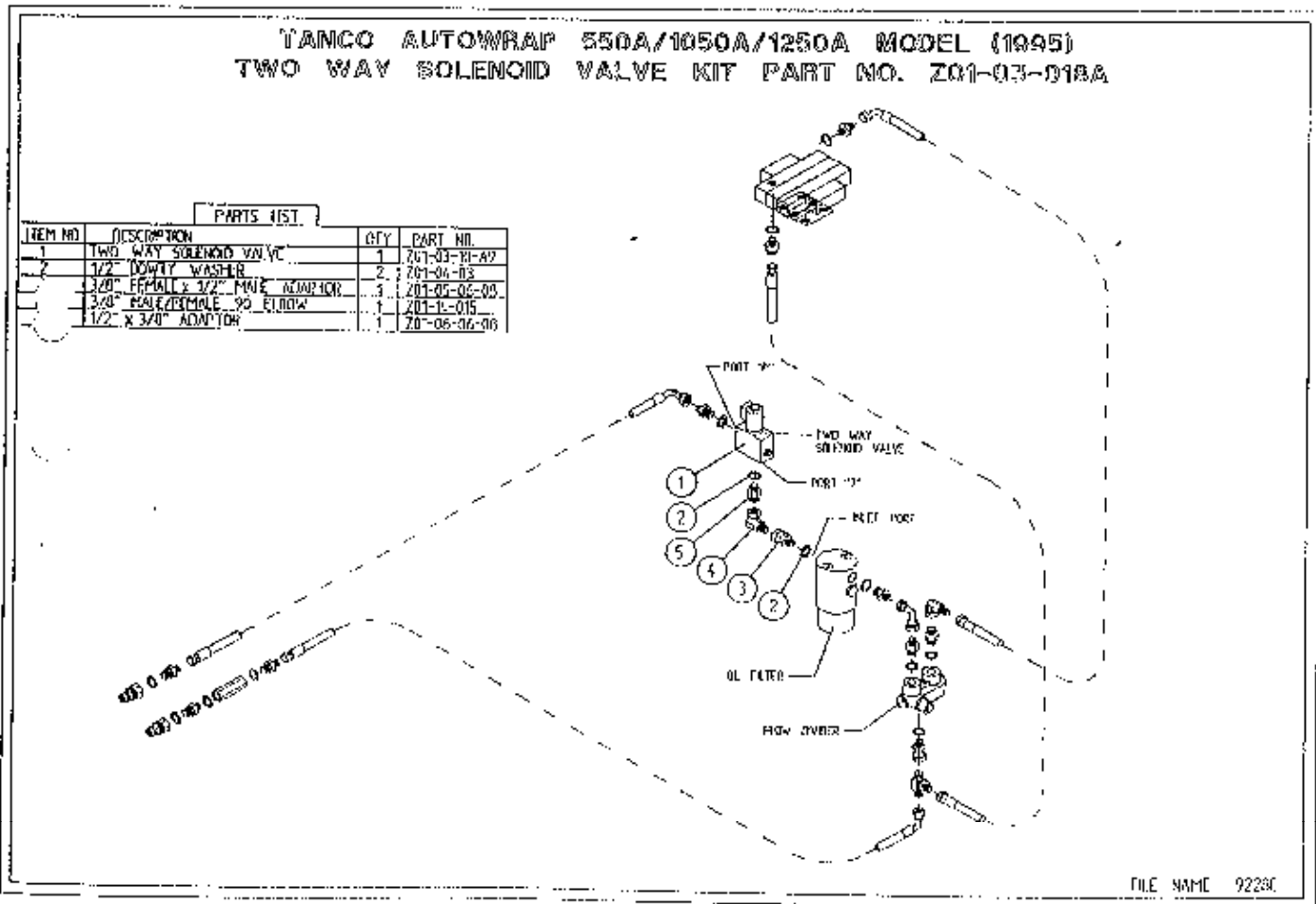
2 2

2

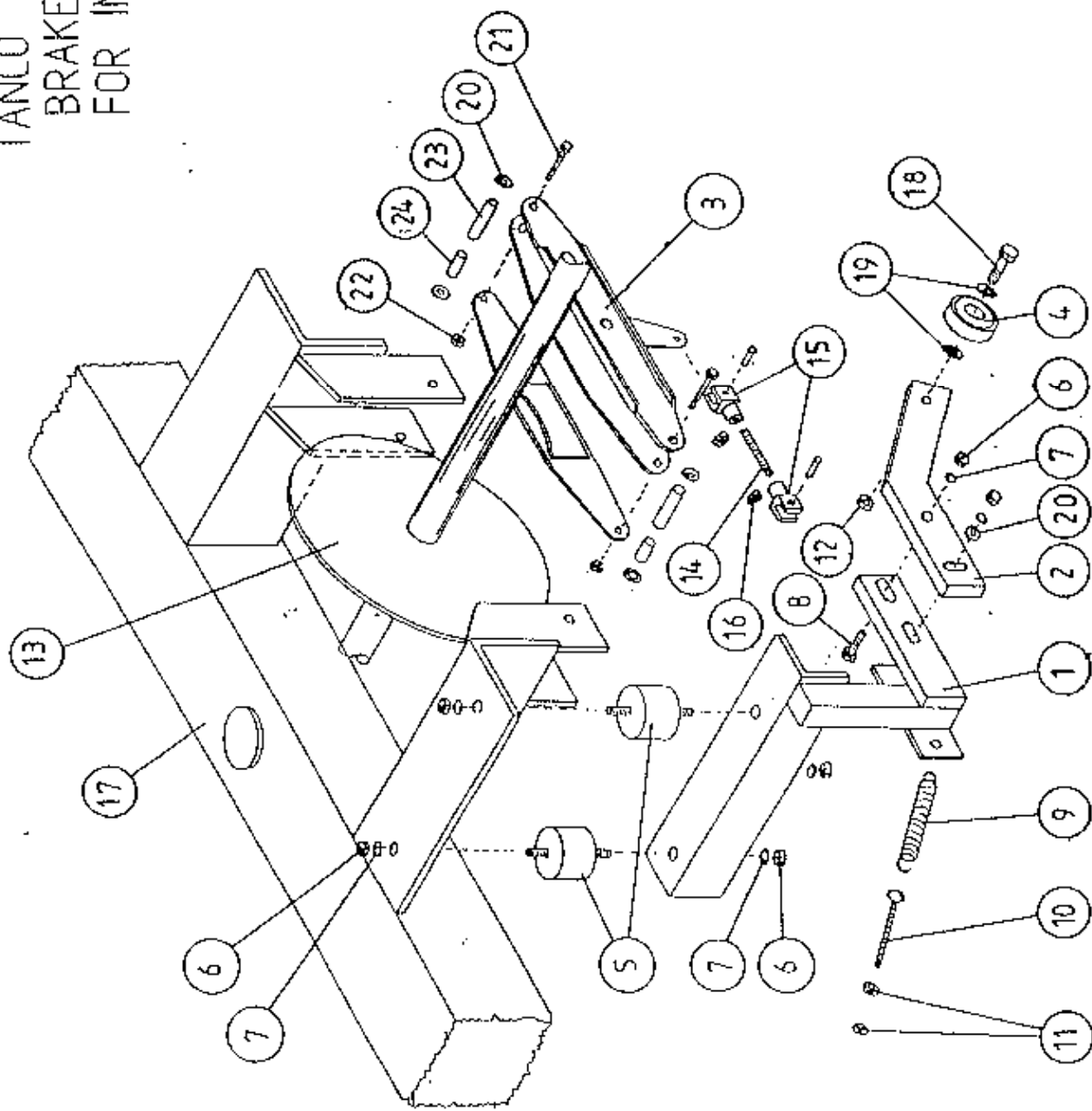
**INSTRUCTIONS FOR FITTING TWO WAY SOLENOID VALVE TO TANCO AUTOWRAP MODELS 550A, 1050A, 1250A.**

**REQUIRE WHEN OPERATING MACHINES ON TRACTORS WITH CLOSED CENTRE HYDRAULIC SYSTEMS.**

1. Disconnect S/90 hose from inlet port on oil filter.
2. Connect port "T" on solenoid valve assembly to inlet port on oil filter.
3. Reconnect St/90 hose to port "P" on solenoid valve.
4. Connect 2 pin female connector to existing 2 pin connector at junction box.
5. Change the seventh controller function setting from n to j  
See instruction manual for further information.



TANCO AUTOWRAP 1995  
 BRAKE ARRANGEMENT  
 FOR INDEXING SHAFT



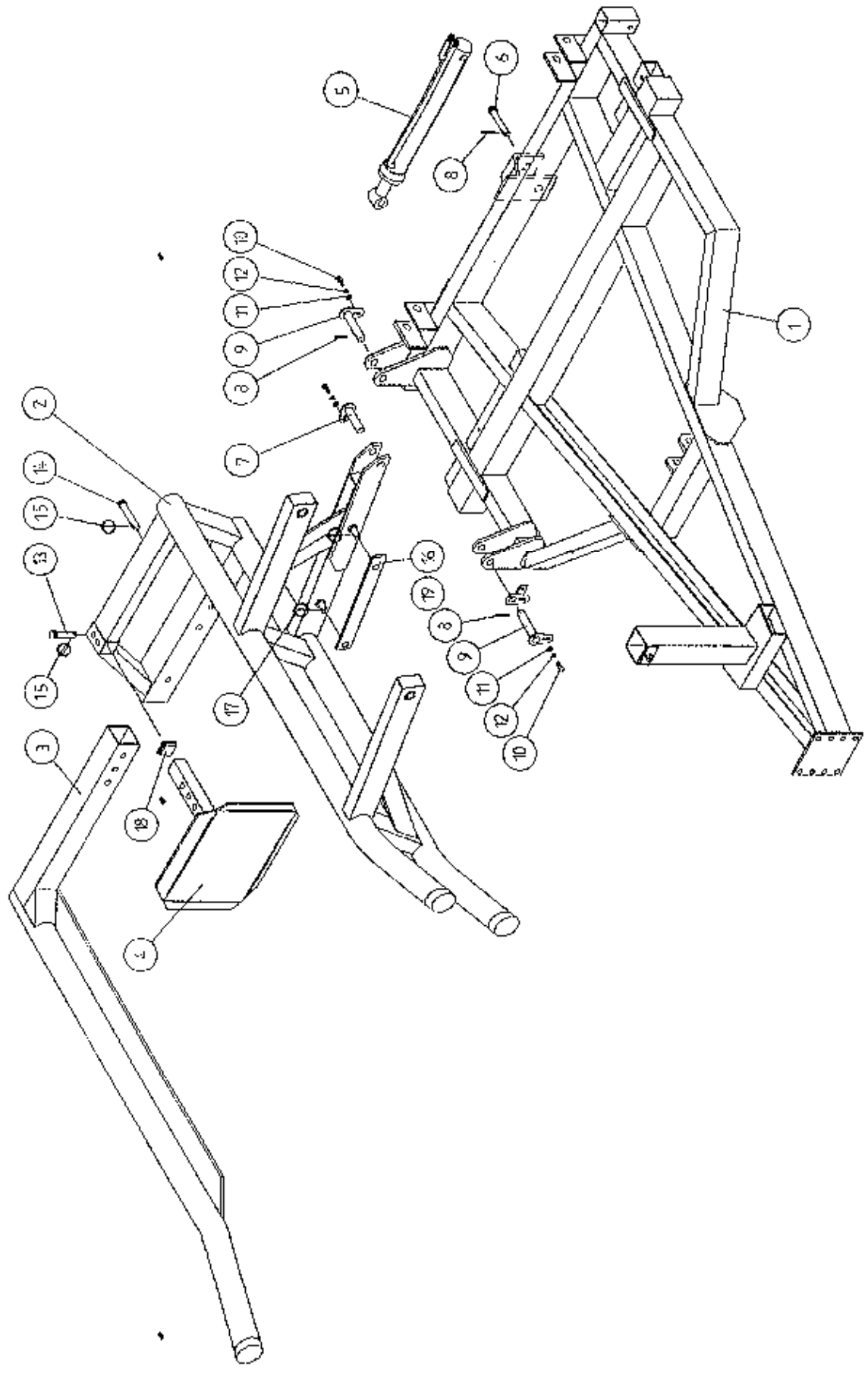
TANCO © 1987

**TANCO AUTOWRAP 1995  
BRAKE ARRANGEMENT FOR INDEXING SHAFT  
PARTS LIST**

ITEM NO	DESCRIPTION	QTY	PART-NO
1.	CAM FOLLOWER MOUNTING BRACKET (UPPER)	1	WD60-CFMB
2.	CAM FOLLOWER MOUNTING BRACKET (LOWER)	1	WD60-804
3.	CALIPER DISC BRAKE UNIT	1	Z49-92
4.	BALL BEARING (6301)	1	Z49-92
5.	RUBBER BUFFER 50MM DIA X 30 LONG TYPE A	2	Z40-21
6.	M10 HEX NUTS	4	Z18-10
7.	10MM DIA SPRING WASHERS	6	Z12-02-10
8.	M10 HEX HD SET X 40 LONG	2	Z26-064S
9.	TENSION SPRING	1	Z07-05
10.	EYE BOLT (M8)	1	WD60-EH
11.	M8 HEX NUTS	2	Z18-08
12.	M12 LOCKNUT	1	Z23-12
13.	SPROCKET/SHAFT ASSY	1	WD65-SPR
14.	5/16" UNF THREADED BAR X 90MM LONG	1	WD60-806
15.	5/16" UNF CLEVIS C/W PIN & CLIP	2	Z49-33
16.	5/16" UNF HEX NUT	2	Z15-05
17.	TURN TABLE	1	WD60-TA
18.	M12 HEX HD SETS X 40MM LONG	1	Z26-084S
19.	12MM DIA FLAT WASHER	2	Z11-02-12
20.	10MM DIA FLAT WASHER	7	Z11-02-10
21.	3/8" UNF HEX HD SET X 3" LONG	2	Z31B-102
22.	3/8" UN FLOCK NUT	2	Z15-06
23.	SPACER 1/2" O.D. X 13/32 I.D. X 1 1/2" LONG	2	Z49-92-01
24.	SPACER 1/2" O.D. X 13/32" I.D. X 1/2" LONG	2	Z49-92-02
25.	CLAMPING PLATE		WD60-836



TANCO AUTOWRAP 1050S/1050A MODELS (1995)  
LIFT ARM ASSEMBLY



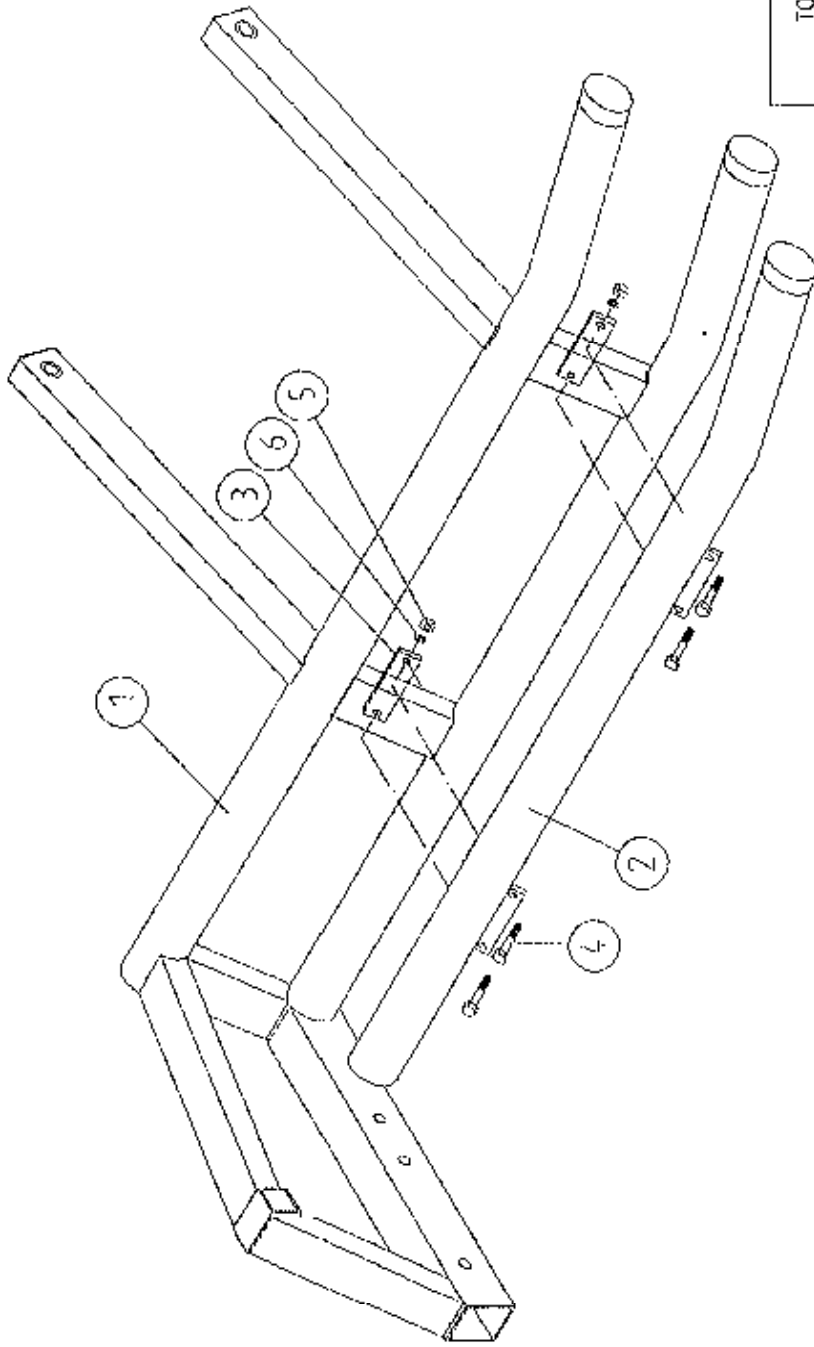
WD60-LA1

TANCO AUTOWRAP 1050S/1050A MODEL (TRAILED) 1995  
PARTS LIST

LIFT ARM AND CHASSIS

ITEM NO.	DESCRIPTION	QTY.	PART-NO.
1.	CHASSIS ASSEMBLY	1	WD60-CHA
2.	LIFT ARM ASSEMBLY	1	WD610-LA
3.	ADJUSTABLE OUTER ARM ASSY	1	WD610-LAA
4.	ADJUSTABLE BALE STOP	1	WD610-LAS
5.	HYDRAULIC RAM (LIFT ARM)	1	Z01-01-AW
6.	RAM BOTTOM PIVOT PIN	1	Z03-02-330
7.	RAM TOP PIVOT PIN	1	Z03-01-797
8.	2" x 1/4" SPLIT PINS	3	Z03-21-29
9.	LIFT ARM PIVOT C/W GREASE NIPPLE	2	Z03-01-905
10.	M10 HEX HD SET x 25mm LONG (TUFLOCK)	3	Z26-061S
11.	10mm DIA MACHINED FLAT WASHER	3	Z11-02-10
12.	10mm DIA SPRING WASHER	3	Z12-02-10
13.	SPAREX PIN	1	Z03-04-74
14.	SPAREX PIN	1	Z03-04-77
15.	7/16" DIA LINCH PINS	2	Z03-22-06
16.	SAFETY SUPPORT BAR	1	WD60-319
17.	6mm DIA LINCH PIN	2	Z03-22-03
18.	PLASTIC CAP	1	Z32-10
19.	LIFT ARM SENSOR MOUNTING BRACKET	1	WD610-LSM

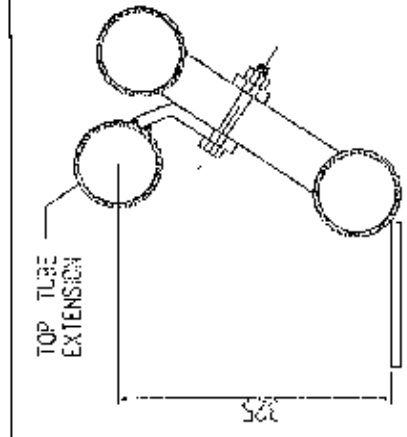
TANCO AUTOWRAP 1050 S / 1050 A MODELS  
TOP TUBE EXTENSION



NOTE:

TOP TUBE EXTENSION IS NOT REQUIRED  
WHEN LIFTING FORD N.H. D 1000 BALES.

HOWEVER IT SHOULD BE FITTED WHEN  
LIFTING SQUARE BALES.

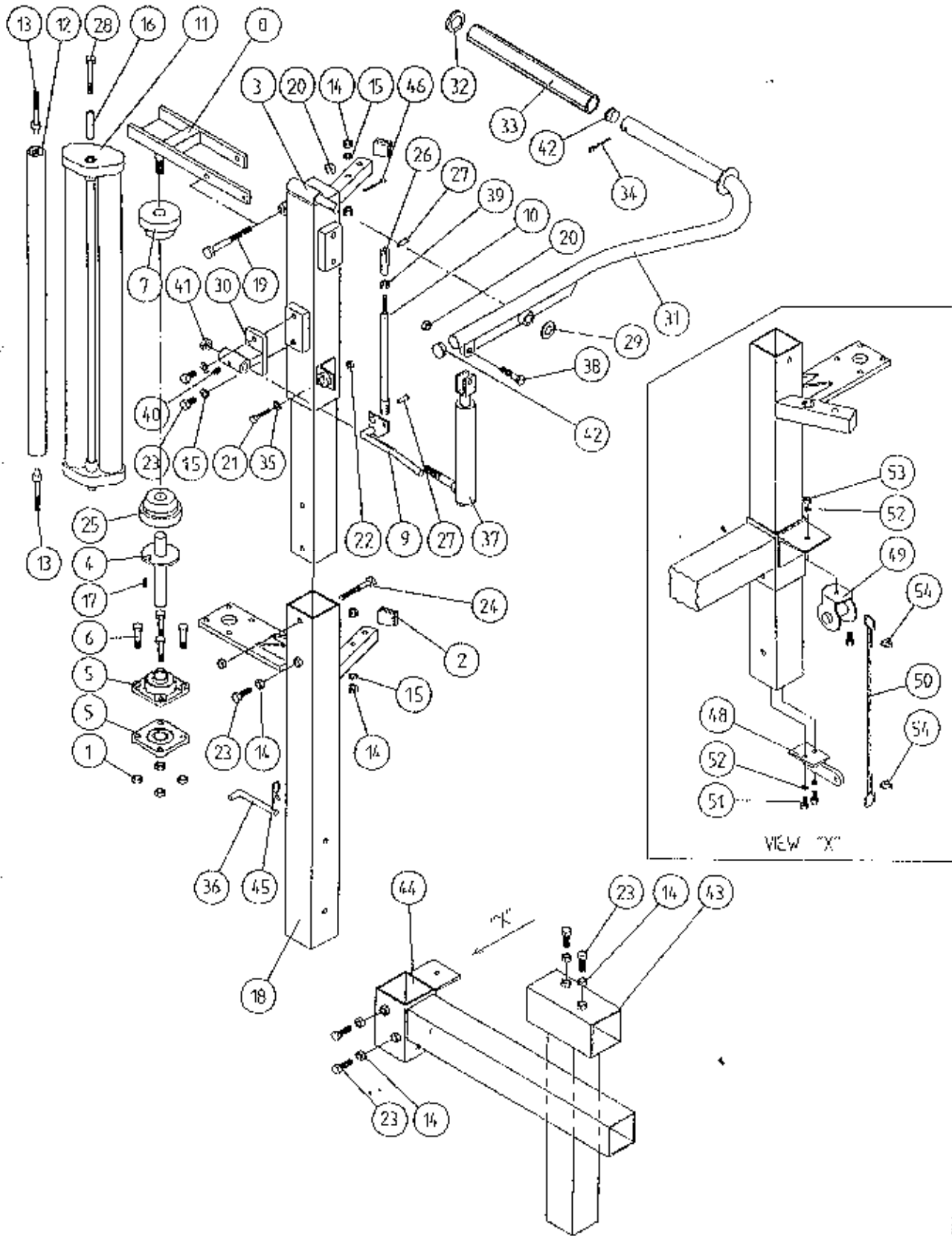


WD610-LA2

TANCO AUTOWRAP 1050S/1050A MODEL (TRAILED) 1995  
TOP TUBE EXTENSION  
PARTS LIST

ITEM NO	DESCRIPTION	QTY.	PART-NO.
1	LIFT ARM ASSEMBLY	1	WD610-LA
2	TOP TUBE EXTENSION	1	WD610-TTE
3	CLAMPING PLATE	2	WD610-76
4	M12 HEX HD BOLT x 90mm LONG	4	Z26-091B
5	M12 HEX NUT	4	Z18-12
6	12mm DIA SPRING WASHER	4	Z12-02-12

# TANCO AUTOWRAP 1050A MODEL 1995 FILM DISPENSER SYSTEM



FILE NAME WD 625-PLB

## FILM DISPENSING SYSTEM

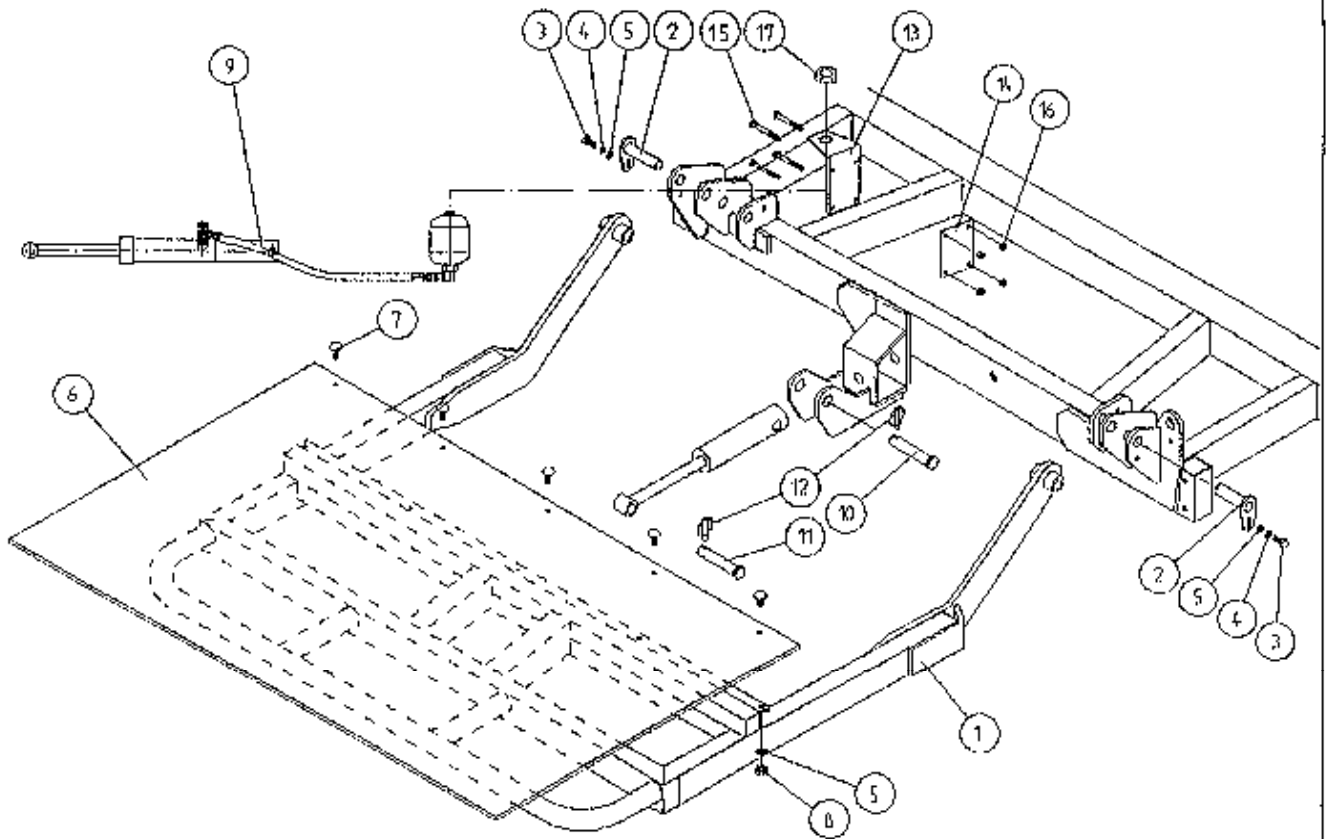
## PARTS LIST

ITEM NO	DESCRIPTION	QTY.	PART-NO.
1	M10 LOCKNUTS	4	Z23-10
2	PLASTIC CAPS (TO SUIT 40 X 40 X 3 RHS)	2	Z32-07
3	DISPENSER MOUNTING (UPPER)	1	WD60-DMUH
4	FILM SPOOL ASSEMBLY	1	WD60-SPO
5	1" DIA FLANGE BEARING C/W CAM LOCK	1	Z06-48EC
6	M10 HEX HD. BOLT X 50MM LONG	4	Z26-066B
7	CONE (TOP) C/W BALL BEARINGS	1	Z06-45-01
8	CLAMP ASSEMBLY	1	WD60-DMCA
9	LEVER ASSEMBLY	1	WD60-DMLA
10	LINK ASSEMBLY	1	WD60-DMLK
11*	FILM DISPENSER UNIT MK 8 (55% STRETCH)	1	D615
12	SLAVE ROLLER	1	Z06-8P95-L
13	SLAVE ROLLER PIVOT	2	WD64-SLR
14	M12 HEX NUTS	9	Z18-12
15	12MM DIA SPRING WASHER	2	Z12-02-12
16	SLEVE	1	D52012-95
17	1/4" DIA TENSION PIN X 3/4" LONG	1	Z03-20-062
18	DISPENSER MOUNTING (LOWER)	1	WD610-DMLH
19	M12 HEX HD BOLT X 130MM LONG	1	Z26-094B
20	M12 LOCKNUT	3	Z23-12
21	M8 HEX HD BOLT X 35MM LONG	1	Z26-042S
22	M8 LOCKNUT	1	Z23-08
23	M12 HEX HD SET X 30MM LONG	7	Z26-082S
24	M12 HEX HD BOLT X 100MM LONG	1	Z26-092B
25	CONE (BOTTOM)	1	Z06-45-02
26	CLEVIS (M10)	1	Z49-335
27	PIN (5/16" DIA C/W CLIP	2	Z49-337
28	M12 HEX HD BOLT X 80MM LONG	1	Z26-0901B
29	3/4" DIA FLAT WASHER	1	Z10-02-19
30	FILM PULL DOWN BRACKET ASSY	1	WD65-FPDB
31	FILM PULL DOWN ARM ASSY	1	WD65-FPDA
32	RETAINING WASHER	1	WD60-859
33	ROLLER	1	WD60-866
34	2" X 1/4" SPLIT PIN	1	Z03-21-29
35	8mm DIA MID FLAP WASHER	1	Z11-02-081
36	BISSEL PIN (110MM LONG)	1	WD60-874
37	HYDRAULIC RAM	1	Z01-01-AW25
38	M12 HEX HD. SET X 50MM LONG	1	Z26-086S
39	5/16" UNF HEX NUT	1	Z15-05
40	1/8 BSP ST. GREASE NIPPLE	1	Z39-60
41	M16 LOCKNUT	1	Z23-16
42	1" GB PLASTIC CAP	2	Z32-14
43	DISPENSER MAST HORIZONTAL SOCKET ASSY.	1	WD65-DHS
44	DISPENSER MAST VERTICAL SOCKET ASSY.	1	WD65-DVSL
45	4mm "R" CLIP	1	Z36-02
46	1 1/2" x 3/16" DIA SPLIT PIN	1	Z03-20-05
47	1" DIA FLANGE BEARING	1	Z06-48
48	WINCH CABLE MOUNTING BRACKET	1	WD610-WCM
49	FILM MAST ADJUSTER	1	Z39-10
50	3/16" WIRE ROPE x 2'-0" LONG	1	Z39-20
51	M8 HEX HD SET x 20mm LONG	3	Z26-039S
52	8mm DIA SPRING WASHER	3	Z12-02-08
53	M8 HEX NUT	1	Z18-08
54	WIRE GRIPS	2	Z39-04

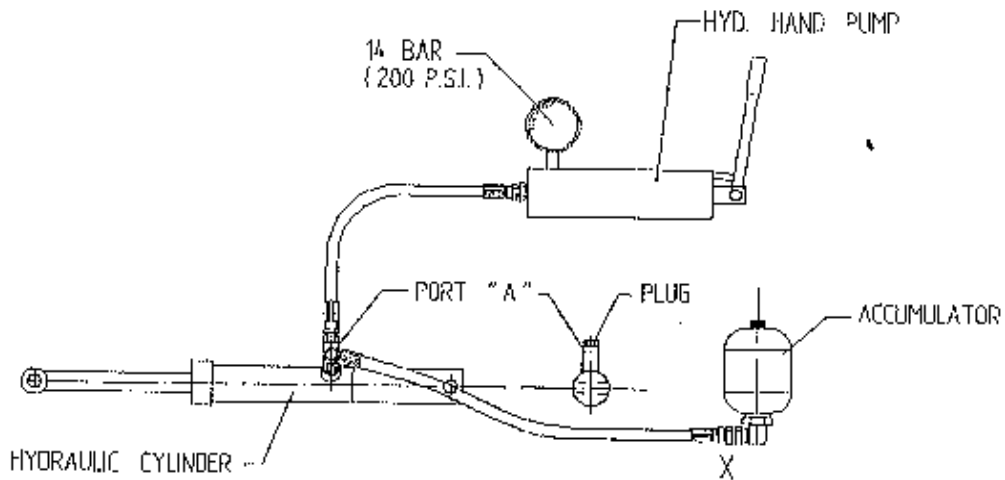
\* NOTE: From Dispenser Serial no. 15370 onwards item no 11 should read  
FILM DISPENSER UNIT MK 9 (55% STRETCH) PART NO: D6161

\* NOTEZ: A partir de no de serie no. 15370 systems de pre extension item no 11 doit lire  
FILM DISPENSER UNIT MK 9 (55% STRETCH) PIECE NO: D6161

# TANCO AUTOWAP 1995 MODEL HYDRAULIC BALE RAMP



## INSTRUCTIONS FOR RECHARGING HYDRAULIC CYLINDER



1. REMOVE PLUG FROM PORT "A".
2. CONNECT HOSE FROM HYD. HAND PUMP TO PORT "A".
3. CHARGE CYLINDER TO A PRESSURE OF 14 BAR (200 P.S.I.)
4. BLEED AIR FROM SYSTEM BY SLACKENING HOSE CONNECTION AT BASE OF ACCUMULATOR MARKED X. RETIGHTEN CONNECTION.
5. REMOVE PUMP HOSE FROM PORT "A" AND REFIT PLUG.

## TANCO AUTOWRAP 1995 MODEL

## HYDRAULIC BALE RAMP

ITEM	DESCRIPTION:	QTY:	PART NO:
1	HYDRAULIC BALE RAMP ASSY	1	WD65-HBRF
2	RAMP MAIN PIVOT PIN C/W GREASE NIPPLE	2	Z03-01-905
3	M10 HEX HD SET X 20mm LONG TUFLOCK	2	Z26-060ST
4	10MM DIA MACHINED FLAT WASHER	2	Z11-02-10
5	10MM DIA SPRING WASHER	12	Z12-02-10
6	BALE MAT	1	Z05-02-BRH
7	M10 X 30MM LONG CUP HD.SQ BOLTS	5	Z13-112
8	M10 HEX NUTS	5	Z18-10
9	HYDRAULIC RAM C/W ACCUMULATOR	1	Z01-01-AWD
10	SPAREX PIN	1	Z03-04-74
11	SPAREX PIN	1	Z03-04-73
12	7/16 DIA LINCH PIN	2	Z03-22-06
13	ACCUMULATOR MOUNTING PLATE	1	WD65-AMP
14	CLAMPING PLATE	1	WD65-231
15	M8 HEX HD BOLT X 80MM LONG	4	Z26-050B
16	M8 LOCKNUT	4	Z23-08
17	M28 X 1.5 PITCH HEX NUT	1	Z18-28



## FAULT FINDING

### PROBLEMS.

1. Drive Belt Slipping on Drive.      Tension belt with Automatic tension set to 25 - 30 degrees - see page 8. Check belt is correct pitch if it has been replaced.
  
2. Drive belt breaking and bottom or Top Rim coming off motor sprocket.      Check that cross line relief valve is working on motor. Check motor mount for alignment. Reduce tension on Drive Belt. Check there is no vertical movement of turntable spindle - if so tighten bearing locking screws on spindle and ensure that collar is secure on spindle below bearing.
  
3. Film Breaking      Wash off dispenser and slave rollers. Change roll of film. Use recommended films only.
  
4. Film not wrapping evenly on bale.      Adjust film mast so centre of film roll is aligned with centre of bale.
  
5. Film Tearing on Ramp.      Check for sharp edges and remove.
  
6. Bale Skidding on Ramp.      Fit Hessian Bag or piece of carpet to Ramp.
  
7. Film Dispenser not Pre-Stretching Film.      Check that both Rollers turn when one is turned by hand. If not, fit new gears or replace unit.
  
8. Tyres coming off 4" platform Support Wheels.      Replace Wheels - Reduce speed below 25 r.p.m. - Do not oil or grease path of wheels on platform.

## FAULT FINDING

### PROBLEMS

#### 9. MAIN BELT MOVING SIDEWAYS

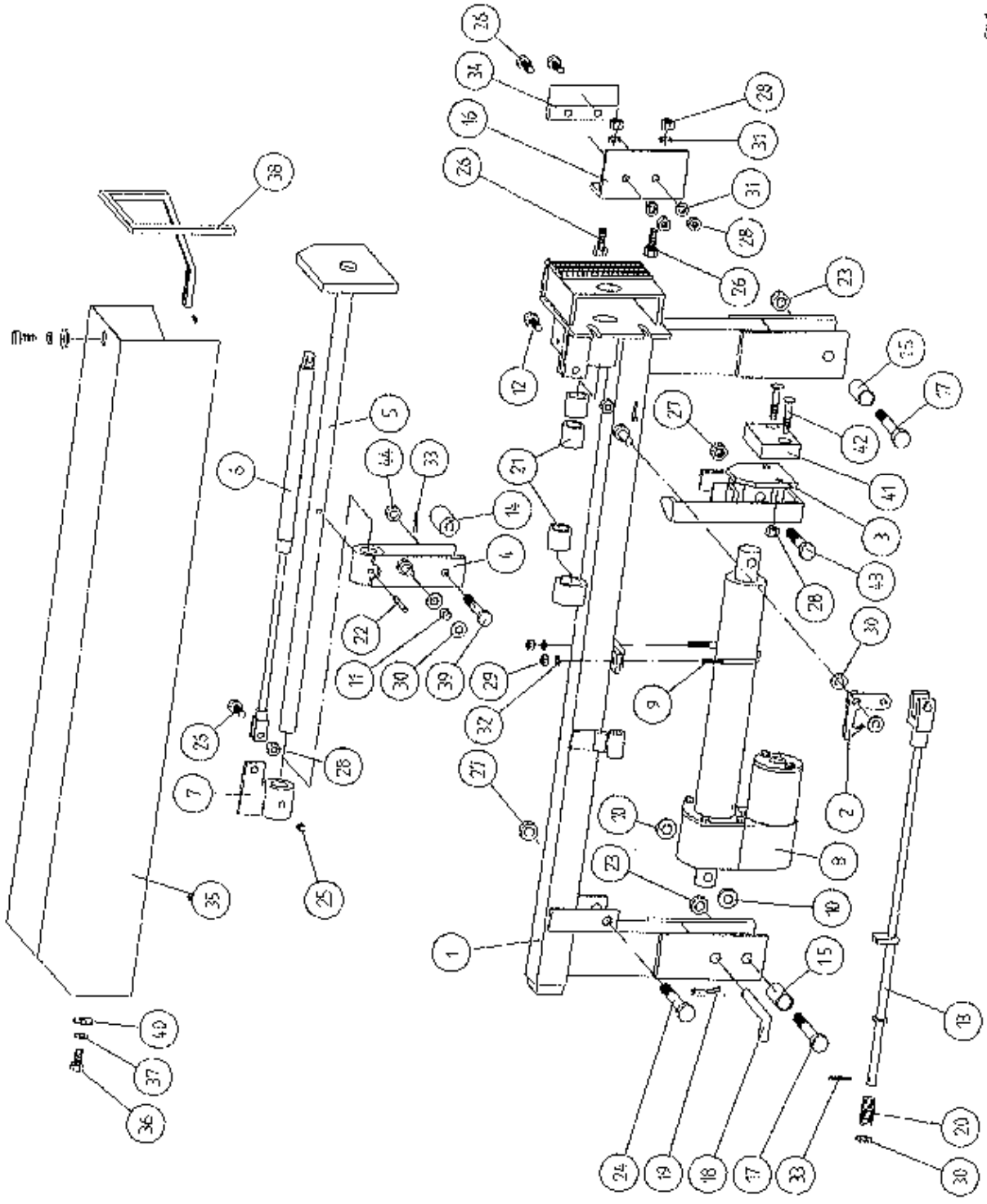
- (i) Ensure vertical rollers (plastic) are tight on the bale. Remember that the bale will reduce in size during wrapping and, on the round bales in particular, the corners will become rounded so that the bale will tend to move sideways due to centrifugal forces. Now, if the plastic rollers are too far apart, the bale will move against one of the plastic rollers whilst the belt will move in the opposite direction - so adjust the vertical plastic rollers so that they keep the bale central on the belt.
- (ii) Adjust bale stop on lift arm so that bale is loaded centrally onto platform.
- (iii) Check that both 6" rollers underneath the bale belt are running parallel to each other. Remember the golden rule - a belt will always move up a slope, so if the rollers are not parallel to each other then the belt will move to the widest setting.

#### NOTE:

It is important to adjust the idler roller only, as movement of the drive roller will entail adjusting the chain tension also. It is important to note if the belt moves to the same side all of the time, or if it moves first to the gearbox side and then to the other side. With the round bale wrapper, the belt will tend to move to the same side each time because the bale is always loaded the same way.

- (iv) Check that belt is the same measurement each side by running a string around the belt and measuring it. If one side is longer than the other replace the belt but if both sides are same measurement and all above adjustments fail, then try removing the belt and fitting it round the opposite way.

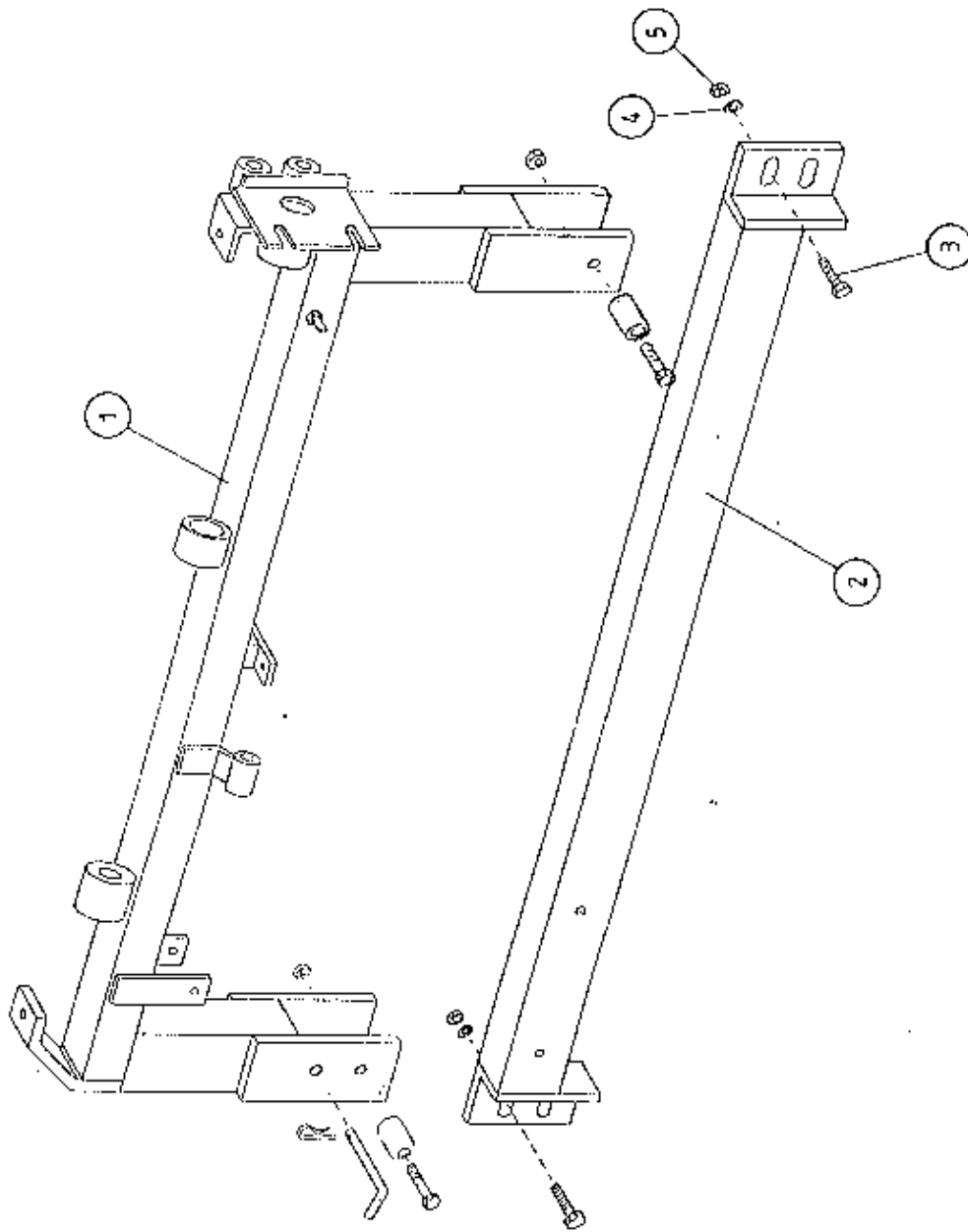
TANCO AUTOWRAP CUT AND START UNIT (1995) MAIN ASSEMBLY



**TANCO AUTOWRAP  
CUT AND START UNIT (1995)  
PARTS LIST**

ITEM NO	DESCRIPTION	QTY	PART-NO.
1.	MAIN MOUNTING FRAME ASSY	1	WD605-MF1
2.	LATCH ASSY.	1	WD605-LA
3.	PUSH PLATE / POINTER ASSY.	1	WD605-PPP
4.	GUIDE ASSY	1	WD605-GD1
5.	PLUNGER ASSY	1	WD605-PL1
6.	GAS SPRING	1	Z07-47
7.	GAS SPRING MOUNTING BRACKET	1	WD605-GSM
8.	WARNER LINEAR ACTUATOR D11 10B5 08	1	ZD605-510
9.	"U" BOLT	1	WD605-45
10.	SPACER 1" X OD X 1/2" ID X 6mm LONG	2	WD605-65
11.	SLEEVE 1/2" DIA O.D. X 13/32" DIA I.D.	1	WD605-47
12.	M8 HEX HD SET X 35mm LONG	1	Z26-042S
13.	TRIGGER ASSEMBLY	1	WD605-TRG
14.	COLLAR 1" DIA BRIGHT RD. X 41.5mm LONG	1	WD605-51
15.	SPACER	1	WD605-100
16.	BLADE GUARD/MOUNTING BRACKET	1	WD605-105
17.	M12 HEX HD BOLT X 80mm LONG	2	Z26-0901B
18.	BISSEL PIN	1	Z03-22-AW100
19.	4mm "R" CLIP	1	Z36-02
20.	SPRING 16mm O.D X 1.5mm WIRE X 48mm LONG	1	Z07-34
21.	OILITE OIL RETAINING BUSH 1 1/8" O.D.	3	Z06-105
22.	1 1/2" X 1/4" DIA TENSION PIN	1	Z03-20-07
23.	M12 LOCKNUTS	2	Z23-12
24.	M12 HEX HD BOLT X 65mm	1	Z26-0882B
25.	M8 GRUB SCREW	1	Z28-008
26.	M8 HEX HD SET X 25mm	3	Z26-040S
27.	M12 BINK LOCKNUT	4	Z23-12BX
28.	M8 LOCKNUT	8	Z18-08
29.	M6 LOCKNUT (NYLOCK)	2	Z23-06
30.	10mm DIA FLAT WASHER	10	Z11-02-10
31.	8mm DIA FLAT WASHER	5	Z11-02-08
32.	6mm DIA FLAT WASHER	2	Z11-02-06
33.	3mm DIA SPLIT PIN	2	Z03-21-02
34.	BLADE	1	WD605-104
35.	MAIN GUARD	1	WD605-MG
36.	M8 HEX HD SET X 20mm LONG	2	Z26-039S
37.	8mm DIA SPRING WASHER	9	Z12-02-08
38.	EDGING STRIP	1	Z44-12
39.	M10 HEX HDSET X 20mm	2	Z26-060S
40.	8mm DIA FLAT WASHER 1" O.D.	4	Z11-02-081
41.	PACKER	1	WD605-133
42.	M8 X 40 COUNTER SUNK BOLT	2	Z13-5-08X40
43.	M12 HEX HD BOLT X 50mm LONG	1	Z26-086B
44.	M10 LOCKNUT	1	Z23-10

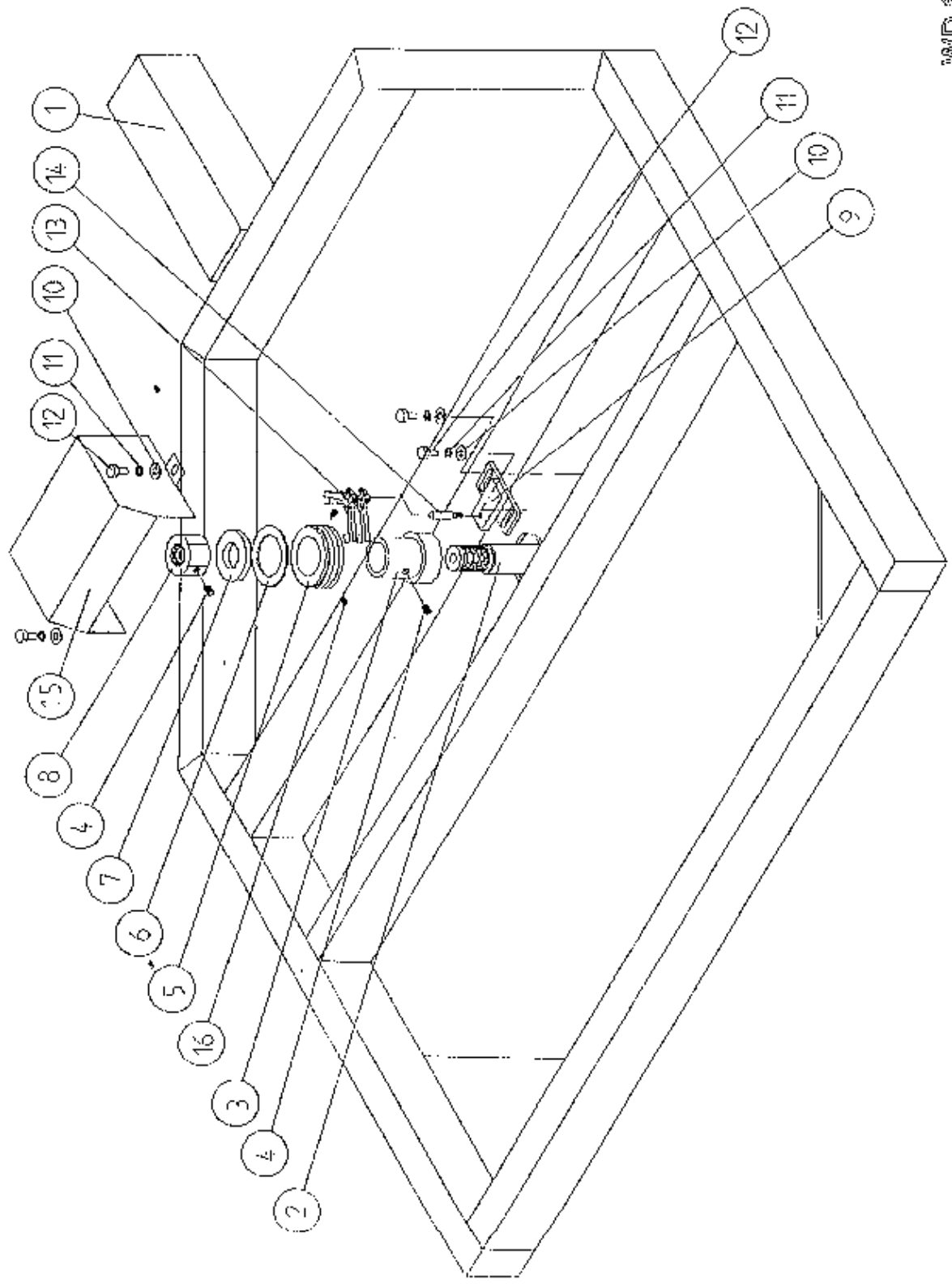
TANCO AUTOWRAP CUT AND START MOUNTING FRAME



TANCO AUTOWRAP CUT AND START UNIT (1995)MOUNTING FRAMEPARTS LIST

ITEM NO	DESCRIPTION	QTY	PART-NO
1.	MAIN MOUNTING FRAME ASSY	1	WD605-MF
2.	MAIN FRAME MOUNTING	1	WD605-MFM
3.	M10 HEX HD SET x 30mm LONG	2	Z26-062S
4.	10mm DIA SPRING WASHER	2	Z12-02-10
5.	M10 HEX NUT	2	Z18-10

TANCO AUTOWRAP - CUT AND START UNIT (1995)  
SLIP RING ASSEMBLY



WD 305 - PL2

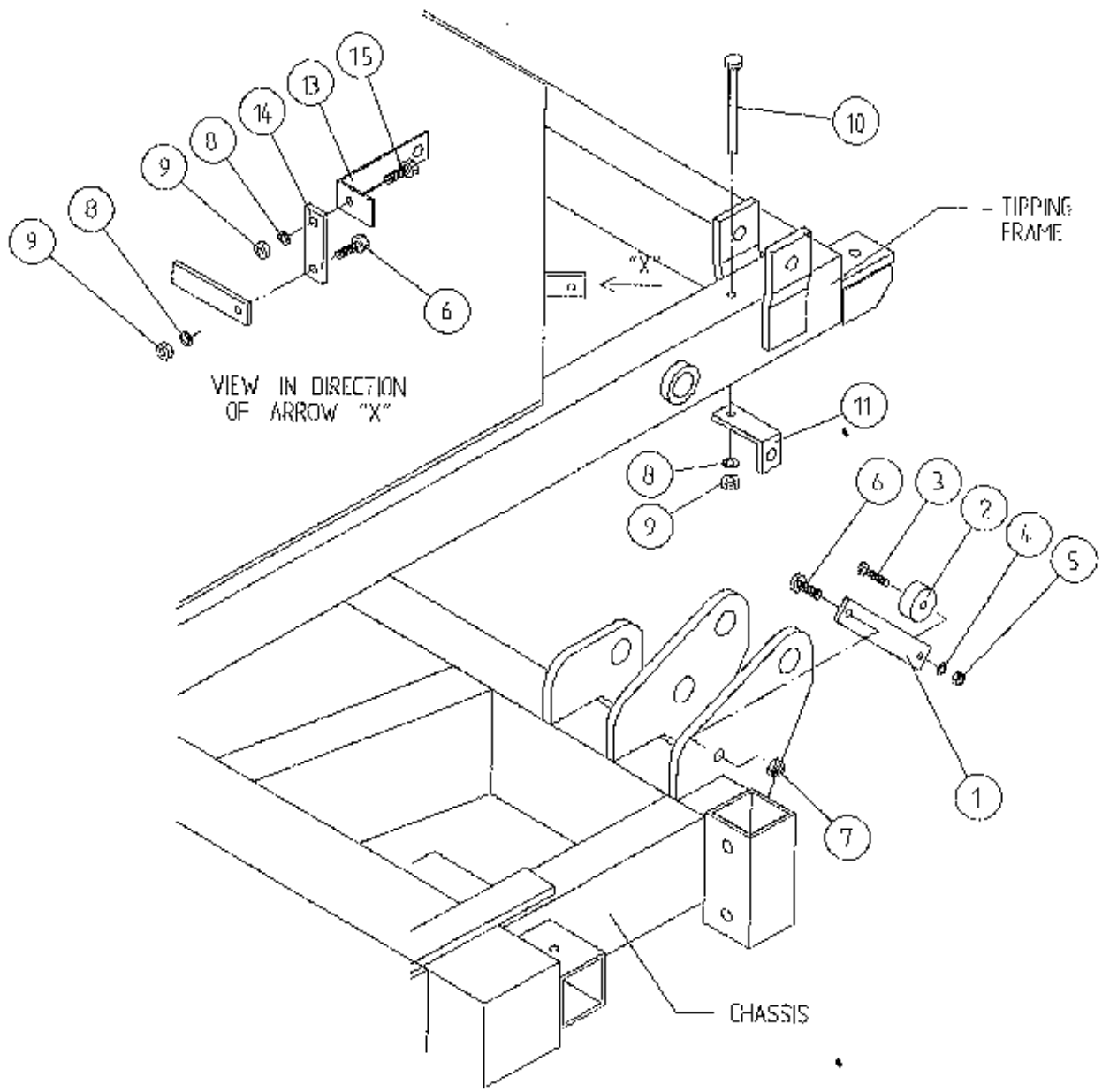
TANCO AUTOWRAP CUT AND START UNIT (1995)  
SLIP RING ASSY.

## PARTS LIST

<u>ITEM NO.</u>	<u>DESCRIPTION</u>	<u>QTY.</u>	<u>PART-NO.</u>
1.	UNDERSIDE OF TIPPING FRAME	1	
2.	TURNTABLE CENTRE SHAFT	1	WD60-768
3.	SLIP RING MOUNTING SLEEVE	1	WD60-825
4.	M8 GRUB SCREW x 6 mm LONG	2	Z28-007
5.	SLIP RING ASSY.	1	ZD605-308
6.	INSULATING RING	1	ZD605-350
7.	LOCKING COLLAR	1	WD60-770
8.	1 1/4" UNC HEX NUT	1	Z18-300
9.	SLIP RING MOUNTING BRACKET ASSY	1	WD605-SRMB
10.	10mm DIA FLAT WASHER 1" O.D.	4	Z11-02-101
11.	10mm SPRING WASHER	4	Z12-02-10
12.	M10 HEX HD SET x 20mm	4	Z26-060S
13.	BRUSHES	2	ZD605-306
14.	INSULATOR SLEEVE	1	ZD605-302
15.	SLIP RING GUARD ASSY	1	WD605-SRG
16.	M5 GRUB SCREW	2	Z28-005



# TANCO AUTOWRAP CUT AND START UNIT (1995) SENSOR & MAGNET MOUNTING BRACKETS



FILE NAME WD64-P153

TANCO AUTOWRAP CUT AND START UNIT 1995SENSOR AND MAGNET MOUNTING BRACKETSPARTS LIST

ITEM NO.	DESCRIPTION	QTY.	PART-NO.
1.	MAGNET MOUNTING BRACKET	1	WD605-57
2.	MAGNET	1	D6043
3.	M6 HEX HD SET x 30mm LONG	1	Z26-022S
4.	6mm DIA FLAT WASHER	1	Z11-02-06
5.	M6 LOCKNUT	1	Z23-06
6.	M8 HEX HD SET x 25mm LONG	2	Z26-040S
7.	M8 LOCKNUT (NYLOCK)	1	Z23-08
8.	8mm DIA SPRING WASHER	3	Z12-02-08
9.	M8 HEX NUT	3	Z18-08
10.	M8 HEX HD SET x 100mm LONG	1	Z26-057S
11.	SENSOR MOUNTING BRACKET	1	WD605-58
12.	SENSOR MOUNTING FLAT	1	WD605-164
13.	ROTATE SENSOR MOUNTING BRACKET	1	WD605-140
14.	MOUNTING FLAT	1	WD605-07
15.	M8 HEX HD SET x 20mm LONG	1	Z26-020S

TANCO AUTOWRAP AUTOMATIC MODELS

Cut and start

Fault Finding Summary.

This summary is to be read in conjunction with operators handbook.

Note: It has been found that most faults can be attributed to a bad power supply. Therefore it is essential that power supply be taken directly from battery terminals, ensuring correct polarity.

Operating voltage is 10V D.C. (under load) to 13.5V D.C.

Problem

(1) Bale Wrap monitor does not power on.

Proposed Remedy

(a) Check polarity on connections to battery terminals.

(b) Check fuse, in power supply cable to controller.

(2) Plunger does not come out after 2 revolutions of turntable.

(a) Check operation in manual mode to ensure that plunger travels in and out. If the plunger does not travel in and out, check all connections from six pin plug, through slip ring to linear actuator.

(b) Check fuse in power supply cable to junction box and replace if necessary.

(2) (i) Buzzer sound continuously "bleep" bleep" and bale wrap monitor does not count above 2 revs.

(c) Check voltage while operating in manual mode. This voltage should be no lower than 10V D.C. (under load). Also check connections on battery terminals.

(d) Check that bale wrap monitor is counting revolutions and if not check that turntable sensor is within 6mm of magnet on turntable.

(e) Carry out continuity check of turntable sensor, by taking reading across 2 & 3 in six pin plug.

(3) Plunger snaps closed after about 7 to 8 turntable revolutions. This is caused by the linear Actuator not stopping in park position.

(a) Reduce setting for programme (1), which indicates the number of seconds required to reverse to park position. Setting can be altered in increments of 0.5 sec. In the park position there should be 5mm to 12mm clearance between cam on push plate assy and latch trigger.

(4) When machine is tipped plunger does not close.

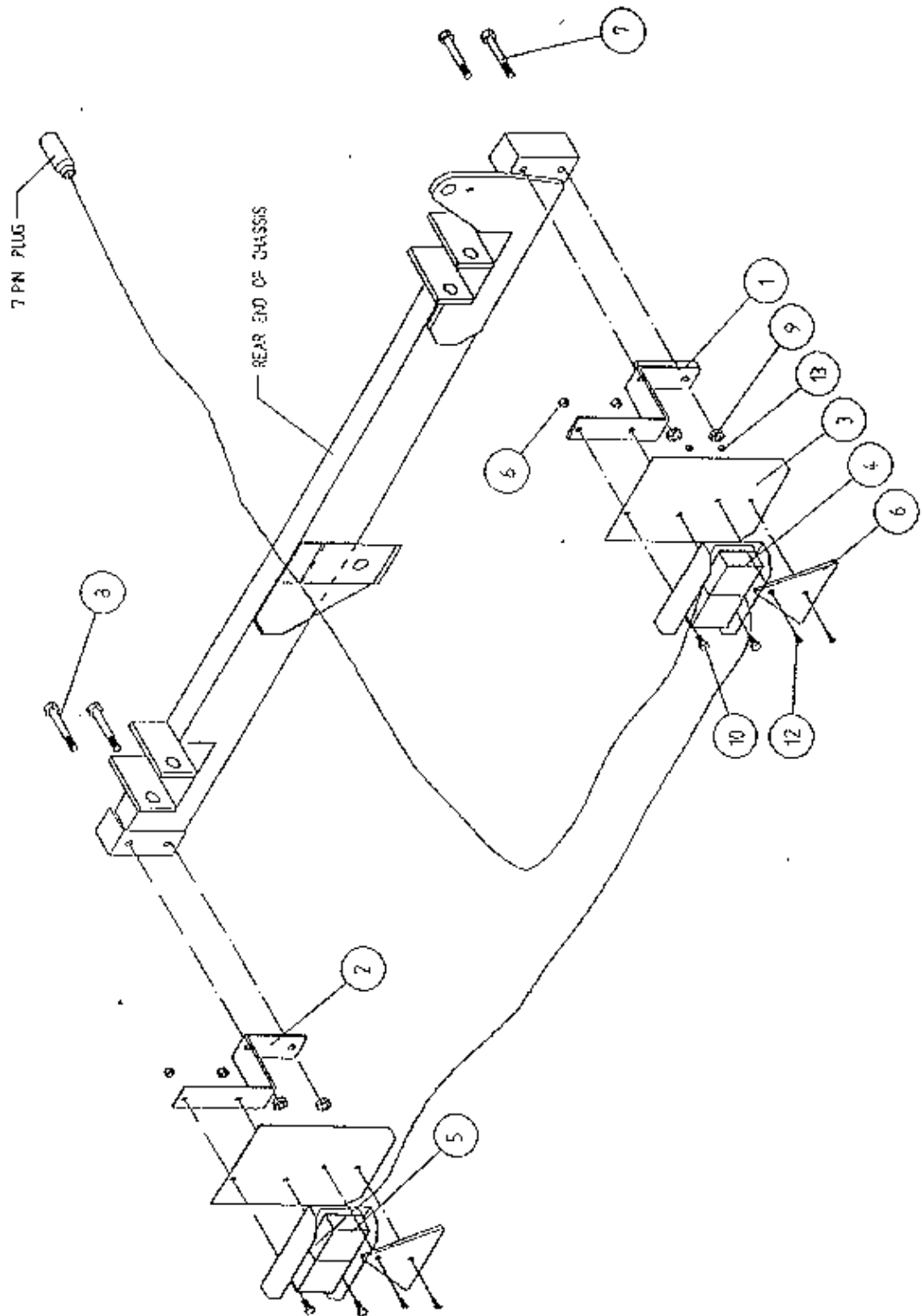
(a) Check clearance between tip sensor on back of tipping frame and magnet of 5mm to 6mm.

(b) Check that tip sensor passes magnet, if not adjust magnet position.

## OPTIONS AVAILABLE

The available options are shown on following pages, some of which are only available as a factory fitted option.

TANCO AUTOWRAP TRAILED MODELS  
LIGHTNING KIT



TANCO AUTOWRAP TRAILED MODELS  
LIGHTING KIT

ITEM NO	DESCRIPTION	QTY	PART-NO.
1.	LIGHT MOUNTING BRACKET RHS	1	WD60-LMB
2.	LIGHT MOUNTING BRACKET LHS	1	WD60-899
3.	LIGHT MOUNTING PLATE	2	WD60-898
4.	LIGHT CLUSTER RHS	1	Z05-30R
5.	LIGHT CLUSTER LHS	1	Z05-30L
6.	TRIANGULAR REFLECTOR	2	Z04-62
7.	M12 HEX HD BOLT X 100 LONG	2	Z26-092B
8.	M12 HEX HD BOLT X 90 LONG	2	Z06-091B
9.	M12 LOCKNUT	4	Z23-12
10.	M8 HEX HD SET X 20 LONG	4	Z26-39S
11.	M8 LOCKNUT	4	Z23-08
12.	M6 CHEESE HEAD SET X 20 LONG	4	Z13-15
13.	M6 LOCKNUT	4	Z23-06